



**IRRIGATION**  
**NEW ZEALAND**

WATER | FOOD | FIBRE | LIFE

# The New Zealand Water Measurement Code of Practice



**NOVEMBER 2021**

# Credits

---

## PREPARED BY

Fiona Myles, Adrian Mahalingam, James Beech, Tim Strang.  
Opus International Consultants Limited Environmental

## REVIEWED BY

Nick Adams – Work Group Manager  
Level 9, Majestic Centre, 100 Willis Street  
PO Box 12 003, Wellington 6144, New Zealand

## APPROVED FOR RELEASE BY

Stephen McNally – Manager, Environmental Engineering and  
Resource Management

Date: November 2010

Reference: 3-50837.00

Status: Final

## UPDATED

Andrew Curtis – Chief Executive, IrrigationNZ  
April 2012

## UPDATED

Brett Marais – Technical Manager, IrrigationNZ  
June 2013

## UPDATED

Charlotte Butler – Project Manager, IrrigationNZ  
October 2014

## UPDATED

Vicky Bloomer – Project Manager, Drop Consulting Ltd  
November 2021

# Acknowledgements

---

This Code has been reviewed and updated in 2021 by Drop Consulting Ltd for Irrigation New Zealand Ltd, with funding and support from the Ministry for the Environment in response to the reforms of the Resource Management (Measurement and Reporting of Water Takes) Regulations 2010 published in 2020.

This original Code (2010) was prepared by Opus International Consultants Ltd (Opus) for Irrigation New Zealand Ltd, with funding and support from the Ministry for the Environment. The project was initiated by the Ministry for the Environment to complement the introduction of Resource Management (Measurement and Reporting of Water Takes) Regulations 2010.

Irrigation New Zealand has managed several iterations to the Code (2012, 2013, 2014, 2018 and 2021) as part of their ongoing efforts to promote excellence in irrigation development and efficient water management throughout New Zealand, based on the principles of responsible and sustainable water management.

Preparation of the original Code and its updates has been made possible by the contributions of many organisations, companies and individuals. IrrigationNZ would particularly like to acknowledge contributions from Consenting Authorities and members of the Blue Tick Accredited water measurement companies.



**IRRIGATION**  
**NEW ZEALAND**  
WATER | FOOD | FIBRE | LIFE



# Contents

<b>Section A: Introduction and background</b>	<b>4</b>		
<b>A1 Introduction</b>	<b>4</b>		
A1.1 Purpose of Code	4		
A1.2 Scope	4		
A1.3 Background	4		
A1.5 Further advice and information	5		
A1.4 Definitions	5		
<b>Section B: Water measuring devices for full pipes</b>	<b>6</b>		
<b>B1 Requirements of regulations for full pipes</b>	<b>6</b>		
B1.1 Requirements of a water meter	6		
B1.2 Installation requirements	7		
B1.3 Verification requirements	7		
<b>B2 Guidance for water permit holders for full pipes</b>	<b>7</b>		
B2.1 Water meter requirements	8		
B2.2 Water meter selection	9		
B2.3 Installation of water meters	12		
B2.4 Verification of accuracy	16		
<b>References</b>	<b>22</b>		
<b>Section C: Water measurement systems for open channels and partially full pipes</b>	<b>23</b>		
<b>C1 Section introduction</b>	<b>23</b>		
C1.1 Section summary	23		
C1.2 Section structure	23		
C1.3 Assessment of the task	23		
C1.4 The need for specific considerations	24		
C1.5 Trained installers	24		
C1.6 Life-cycle cost model	24		
<b>C2 Water measurement system general considerations</b>	<b>25</b>		
C2.1 Accuracy	25		
C2.2 Measuring range capability	27		
C2.3 Location	27		
C2.4 Record keeping	27		
C2.5 Allowing for verification	28		
C2.6 Security	28		
C2.7 Other considerations	28		
C2.8 Commissioning	28		
C2.9 Submission of installation information	28		
<b>C3 Verification</b>	<b>29</b>		
C3.1 Purpose and scope of verification	29		
C3.2 Approved verifiers	29		
C3.3 Required verification frequency	29		
C3.4 Reference measurement equipment	29		
C3.5 Test volumes	29		
C3.6 Test flow rates	30		
C3.7 Verification methods for open channels	30		
C3.8 Verification methods for partially full pipes	30		
C3.9 Determination of measurement accuracy compliance	30		
C3.10 Site verification	31		
C3.11 Verification report	31		
C3.12 Non-compliance	31		
<b>C4 Open channel water measurement technique</b>	<b>32</b>		
C4.1 Measurement techniques	32		
C4.2 Stage-discharge method	32		
C4.3 Recommended decision process	34		
C4.4 Recommended service interval for open channel systems	34		
<b>C5 Partially full pipe flow</b>	<b>35</b>		
<b>Section D: Data management</b>	<b>36</b>		
<b>D1 Requirements of the regulations for data management</b>	<b>36</b>		
D1.2 Regulatory requirements	36		
D1.3 Method of data collection	36		
D1.4 Methods of recording	36		
D1.5 Reporting requirements	37		
D1.6 Why is your data important?	38		
<b>D2 Good management practice – data management</b>	<b>39</b>		
D2.1 Data collection and recording	39		
D2.2 Data reporting	39		
D2.3 Technical faults	39		
D2.4 Third party data service Providers	40		
<b>Section E: Requirements for portable pumps</b>	<b>41</b>		
<b>E1 Portable pumps</b>	<b>41</b>		
E1.1 Portable pumps	41		
E1.2 Situations requiring portable infrastructure	41		
E1.3 Challenges of metering prior to pumps	41		
<b>E2 Portable pump design and commissioning</b>	<b>41</b>		
E2.1 Meter installation	41		
E2.2 Water meter display	41		
E2.3 Water take reporting	41		
E2.4 Commissioning	42		
<b>E3 Portable pump maintenance and management</b>	<b>42</b>		
E3.1 Frequency of inspections	42		
E3.2 Winterisation	42		
E3.3 Permit holders annual responsibilities	43		
<b>Appendices</b>	<b>43</b>		
Appendix A Explanation of element protection standards	43		
Appendix B Other considerations for open channel and partially full pipe Systems	45		
Appendix C Uncertainty and error – determination of measurement accuracy	46		
Appendix D Consenting Authority approved verification methods	49		
Appendix E Consenting Authority verification frequency	51		

# Section A: Introduction and background

## A1 Introduction

### A1.1 PURPOSE OF CODE

The purpose of this Code is to outline the requirements and good industry practice for the selection, installation verification, and validation of water measurement devices/systems required for water permit holders to meet their obligations under the Resource Management (Measurement and Reporting of Water Takes) Regulations 2010 (Reprint 2020) from here on referred to as the Regulations.

This guidance has been developed to:

- Provide guidance on the selection, installation, verification and validation of suitable water measurement devices/systems for compliance with the Regulations; and
- Promote accurate measurement of water takes to assist in the monitoring process for environmental monitoring, water permit compliance and allocation setting.

### A1.2 SCOPE

This document provides guidance as to how water permit holders are to meet their obligations under the Regulations. This document is separated into three main sections; full pipe systems, open channel and partially filled pipe systems, and data management.

The sections of this document outline the requirements of the Regulations, and then provide guidance as to the minimum standards, expected by Consenting Authorities and used in the industry to meet these requirements.

Please note that a water measurement system or device that fulfils the guidelines in this document is not automatically deemed to comply with the Regulations, i.e. these guidelines do not confer compliance with the Regulations. It is strongly recommended that a permit holder seeks expert advice to ensure they select and install a water meter or measurement system that is fully compliant with the Regulations and any additional consent conditions.

### A1.3 BACKGROUND

#### A1.3.1 Regulations

In 2010, the Regulations were passed pursuant to section 360(1)(d) of the Resource Management Act 1991 (RMA). The Regulations were established to provide a tool to aid in the planning, monitoring, and management of New Zealand's water resources. All holders of water permits (except for non-consumptive takes) that allow fresh water to be taken at a rate of 5 litres per second (L/s) or greater must comply with the requirements of the Regulations and install measuring and reporting systems.

The revised version of the Regulations in 2020 continues to require the same takes to have measuring systems in place but now requires the provision of 15-minute data, to be provided to the Consenting Authorities daily rather than daily data provided annually.

A transitional period allows existing permit holders to implement any works necessary to become compliant with the water take reporting requirements that came into force on the 3 September 2020. Table 1 outlines when holders of existing permits must comply with the Regulations. Forward planning should ensure that the necessary works are completed in time to comply with the Regulations by these dates.

Table 1: Compliance dates for existing water permit holders

Water Permit	Date for Compliance with the Regulations
20 L/s or more	3 September 2022
10 L/s or more, but less than 20 L/s	3 September 2024
5 L/s or more, but less than 10 L/s	3 September 2026
Less than 5 L/s	Not required to comply with the Regulations

For water permits granted after the 3 September 2020, there is no transitional period, and hence compliance with the Regulations are required immediately, as soon as water is taken.

#### A1.3.2 Relationship between the Regulations and Regional Rules or Permit Conditions Set by the Relevant Consenting Authority

The Regulations, as a part of the RMA, apply to water permit holders (as described above) nationwide. In general, the requirements of the Regulations prevail over a regional rule or a condition placed on a water permit by the relevant consenting authority. However, if a regional rule or water permit condition is more stringent than the Regulations, the regional rule or permit condition will prevail over the Regulations.

It is recommended that the water permit holder identifies any relevant regional rule/s or water permit conditions prior to the selection and installation of a water meter to ensure the correct, more stringent, requirements are adhered to.

#### A1.4 DEFINITIONS

**Accuracy** refers to the qualitative description of the closeness of the measurement to the true value, based on the measurement uncertainty which is quantitative.

**Calibration** refers to the process of regularly checking and standardising the measurement of the water metering device or system against another measurement of known accuracy.

**Data Logger** is an electronic devices which automatically record and store environmental parameters recorded over time. The information stored in the data logger is downloaded and transferred to a computer for analysis.

**Error** is the difference between the reference meter measured value and the 'true value' of the service meter. It is presented as a percentage.

**Full pipe flow** refers to flow in a closed pipe or conduit that is full of water.

**Open channel flow** refers to flow driven by gravity, exposed to the atmosphere, and in a conduit such as a canal, flume, ditch, or race.

**Partially full pipe flow** refers to flow driven by gravity in a closed conduit where the conduit is not full, and the flow has a free surface subject to atmospheric pressure.

**Permit**, in relation to a permit holder, means the water permit held by the permit holder.

**Permit holder** means a person/s or company who holds a water permit to which the Regulations apply.

**Range of expected flow rates** refers to the range of minimum to maximum flow rates that the specific conduit would be expected to convey under normal conditions. The maximum expected flow rate is not limited to the maximum permitted flow rate, but to the capacity of the intake structure/system<sup>1</sup>.

**Relevant Consenting Authority** refers to the regional council or unitary authority<sup>2</sup> that granted the water permit.

**Suitably qualified hydrologist** refers to a hydrologist with no less than 5 years of relevant practical experience and trained in the practical aspects of open channel flow measurement and/or holds a Diploma in Field Hydrology

**Suitably qualified verifier** for the purposes of Blue Tick Accreditation refers to a person who holds Unit Standard 27556: Carry out a full pipe water measurement system verification.

**Telemetry** refers to an automated communications process by which measurements and other data are collected and transmitted to receiving equipment for monitoring.

**Uncertainty** is a quantification of the doubt about the measurement result – it indicates the quality of the measurement.

**Validation** refers to formal inspection of the system to establish that the water metering device has been installed according to manufacturers' specifications.

**Verification** refers to formal inspection and testing of the water metering device or system to prove and document that it meets the accuracy requirement of the Regulations.

**Water meter or water measurement system** refers to all components of the measurement configuration that measures and records the volumetric flow rate of water that passes through the conduit

**Water year** refers to a period during the term of the water permit:

- Starting on 1 July or, for the permit's first water year, starting on the first day on which the Regulations apply to the permit; and
- Ending on the next 30 June or, for the permit's last water year, ending on the last day on which these regulations apply to the permit.

1. This is because the Regulations state that the water measurement records must include water taken in excess of what the water permit allows.

2. Based on the definition of regional council in the Resource Management Act 1991.

#### A1.5 FURTHER ADVICE AND INFORMATION

For more information and advice, the relevant Consenting Authority should be contacted. The relevant Consenting Authority can then provide direction as to who is best to contact for the particular advice or information sought.

# Section B: Water measuring devices for full pipes

## B1 Requirements of regulations for full pipes

### B1.1 REQUIREMENTS OF A WATER METER

#### B1.1.1 Records of Water Taken

The Regulations require that a permit holder keep records that provide a continuous measurement of the water taken under a water permit, including any water taken in excess of the amount allowed under the permit. The records must include the cumulative volume (in cubic metres) of the water taken in each 15-minute period and transferred to the Consenting Authority each day (Regulation 6). In some cases the Consenting Authority may allow the 15-minute period measurements to be transferred at an interval greater than each day (Regulation 7A(5)) and in some cases may even be able to allow measurement to be taken on a weekly basis (Regulation 9). Written approval from the Consenting Authority is required for the alternate intervals listed in Regulation 7A(5) and Regulation 9 to occur.

A water meter is therefore required to be installed and capable of measuring and displaying the cumulative volume of water taken, in cubic metres with a datalogger and telemetry unit attached to facilitate the daily transfer of data. Please see Section D2 for further information on data management.

#### B1.1.2 Accuracy

For full pipe water take systems, the Regulations state that a water meter must measure the volume of water taken to within  $\pm 5\%$  of the actual volume taken.

#### B1.1.3 Suited to Expected Conditions

The Regulations require that the water meter used for monitoring the volume taken must be suited to the qualities of the water that it is measuring. Such water qualities that should be considered include temperature, algae content, iron/mineral and sediment content.

#### B1.1.4 Security

A water meter, and any essential external components (e.g. power supply), is required under the Regulations to be sealed and as secure against tampering as practical. Tampering could affect the credibility of the measured data collected by a water meter. Seals should help prevent tampering with the meter and/or indicate when tampering has occurred.

For piped installations, to be tamper proof as practical, the device/system should comply with the following, by not allowing a person to easily remove or manipulate the device without leaving evidence of removal/manipulation.

To achieve this tamper evident seals should be used as follows.

- Water meters shall have flanges both sides of the meter sealed so they cannot be removed without removing a tamper seal.
- All water measuring and recording devices that require mains power to operate shall not be able to be isolated (turned off), while the pump is able to continue to operate.
- Any un-measured off takes before the measuring device must only be for permitted activity takes:
  - For example, often domestic water, stock drinking water and fire fighting take points are considered permitted activities. However, sometimes they are not and you need to read the consent conditions to determine if the take is permitted or consented.
- Breaking of tamper seals – tamper seals shall only be broken by an approved installer, except for urgent access to back up irrigation outlets or for firefighting purposes.
  - Water permit holders shall not break seals to undertake their own maintenance without informing the appropriate Consenting Authority.
  - Consenting Authorities should have a protocol for recording when tamper seals are broken. This should record why seal was broken, by whom, and when the new seal was replaced. It is suggested that seals are broken by approved installer are recorded and reported to Consenting Authority within 2 days and those broken by water permit holders within 8 hours to enable auditing if required.



Image: An example of a Tamper Tag with a unique serial number inserted onto a bolt securing a flange.

## B1.2 INSTALLATION REQUIREMENTS

### B1.2.1 Location of Water Meter

The Regulations require that a water meter be located at the location from which the water is taken, or as close as practical to this place as permitted by the Consenting Authority. As the Regulations also require that the water meter be verified on a regular basis and is required to be located in a position with suitable access for this purpose.

If the location of the point of take is unsuitable for installing a water meter or measuring system, for example, on a known flood plain, then the permit holder shall apply to the Consenting Authority for approval under Regulation 10 to install the system at an alternate location.

## B1.3 VERIFICATION REQUIREMENTS

### B1.3.1 Frequency of Verification

Verification of a water meter is required by the Regulations. The verification process gives confidence that a meter meets the required accuracy standard. A water meter must be verified as suitably accurate within the first water year of it being installed and at a maximum period of no greater than 5 years thereafter, or at an interval specified by the Consenting Authority.

Verification is to be performed on-site or, at an accredited laboratory with permission from the Consenting Authority. If the meter is verified in a laboratory, the verifier may require that the minimum upstream and downstream pipe work lengths required to minimise flow disturbances in the configuration (as set out in Section B2.3.2), are also dismantled and used in the laboratory verification. It is therefore necessary to consider the verification process when selecting the installation and pipe work configuration for a water meter.

It is essential to check what the approved method of verification is before work commences – please see Appendix D or contact the Consenting Authority.

## B2 Guidance for water permit holders for full pipes

The following section provides guidance to the minimum requirements for a water meter, its installation and verification, when installed in a full pipe. These requirements are not explicitly stated in the Regulations, but are considered necessary in order to meet the requirements that are stated in the Regulations. Please note that meeting the requirements of this guidance section will not guarantee compliance with the Regulations. It is strongly recommended that water permit holders seek expert advice to ensure that a water meter that is able to be verified as fully compliant with the Regulations is selected and installed.

Figure 1 presents a recommended flow diagram/decision tree which summarises the issues to be considered by permit holders when selecting and installing a meter for a full pipe system.

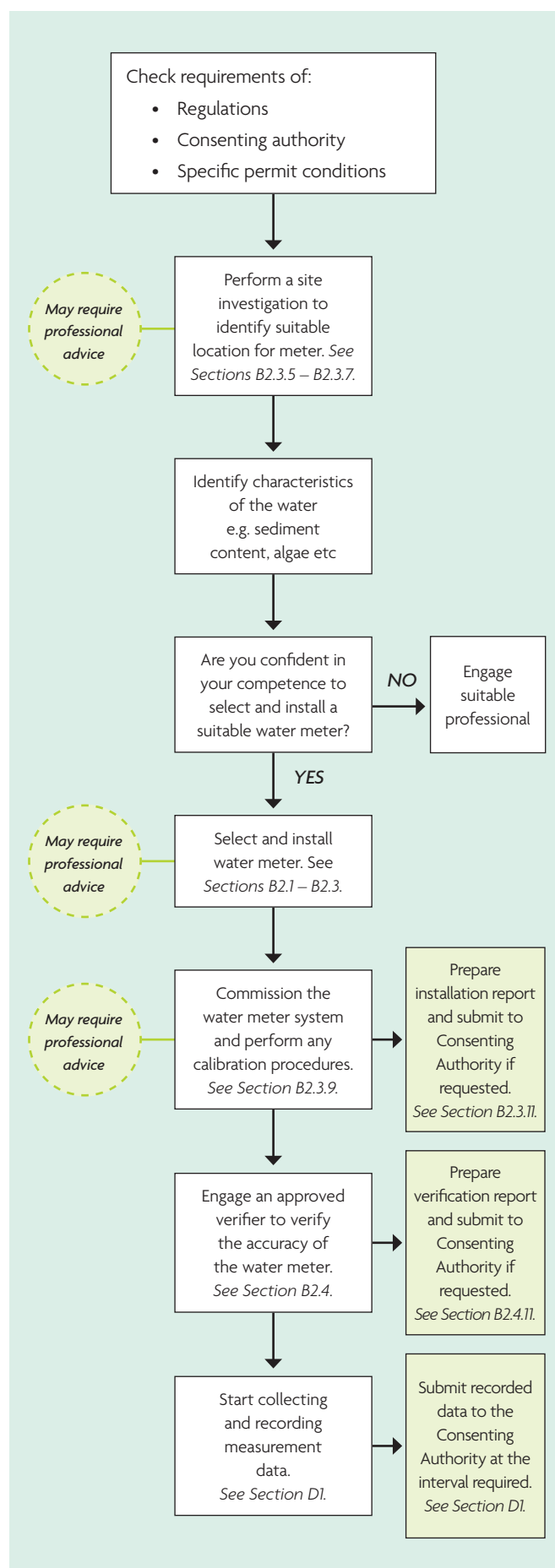


Figure 1. Recommended decision process for permit holders with full pipes



## **B2.1 WATER METER REQUIREMENTS**

### **B2.1.1 Water Meter Accuracy**

The water meter must be warranted by the manufacturer, that it will meet the required accuracy standard, such that when it is installed according to the manufacturer's instructions, the in-situ determination of water volume meets the accuracy limits as stated in the Regulations ( $\pm 5\%$ ).

The meter must be supplied from a manufacturer certified as compliant to ISO 9001 – Quality Management Systems and the meter's metrological accuracy must have been laboratory-verified prior to installation.

The meter chosen must also meet the following standards:

- ISO4064-1:2005 and/or
- ISO4064-1999 class B and/or
- OIML R49.1:2006 pattern approved

These standards relate to the measurement of water flow in fully charged closed conduits (using meters) for cold water and hot water.

### **B2.1.2 Water Meter Display**

The purpose of an on-site display is to provide a reliable and unambiguous visual indication of the real-time measurement data. The display must have the following characteristics:

- Displays the cumulative volume expressed in cubic metres ( $m^3$ ), with:
  - sufficiently large registering range to record cumulative volume corresponding to 1 year at the maximum flow rate for which the meter is rated without passing through zero, and
  - a scale interval such that verification can be completed in a practical and cost effective time-frame on-site – the least significant digit should ideally be small enough to ensure that the resolution error of the display does not exceed 0.5% of the equivalent volume passed at the minimum rated flow rate during a 15 minute period
- The values displayed must be precisely the same value as that recorded in a data logger (if installed);
- Be of a size and type that is easy to read with clearly specified units;
- Capable of continuous measurement and totalising; and
- Resistant to corrosion and fogging.

Some Consenting Authorities may also require that the meter display the measured flow rate in litres per second (L/s) or cubic metres per second ( $m^3/s$ ) with a minimum resolution of two decimal points for verification purposes. The permit holder is responsible for checking the requirements of the Consenting Authority.

### **B2.1.3 Data Logging and Subsequent Transfer**

The Regulations require that the meter be able to provide 15-minute period data and that the data be transferred electronically to the Consenting Authority daily. To comply with this requirement it is easiest to fit an electronic data logger and telemetry unit.

Where approval is given under Regulation 7A(5) and a data logger is used without a telemetry unit, the permit holder is required to download and provide data at an interval and format specified by the Consenting Authority. Please see Section D1.5.1 for information on applying for exemptions and download frequency.

It is recommended that data loggers, if installed, should have sufficient capacity to store no less than one year of water take data, with a logging interval of 15 minutes. Always check the consent conditions to ensure the equipment being installed is capable of meeting compliance requirements.

The National Environmental Monitoring Standards (NEMS) is a suite of documents dealing with different aspects of environmental monitoring by Consenting Authorities. The NEMS document on Water Meter Data indicates how Consenting Authorities would like data to be presented and how they will manage and use the data. The NEMS document is available at: [www.nems.org.nz](http://www.nems.org.nz).

### **B2.1.4 Electrical Power Source**

Where an installed meter relies on an electrical power source, it shall have a non-volatile memory to ensure that recorded data is not lost in the event of a power or battery failure. The meter must be designed such that in the event of an external power supply failure (AC or DC), the meter indication of volume immediately before failure is not lost, and remains accessible for a minimum of one year. Any other properties or parameters of the meter shall not be affected by an interruption of the electrical supply.

### **B2.1.5 Security**

The Regulations state the water measurement system must be sealed and be as tamper-proof as practicable. Tampering would affect the credibility and hence the usefulness of the data collected. Therefore, the design and installation of the water metering system must take into account all practicable steps to protect the components of the water metering system from intentional tampering. This includes protection devices/seals for individual components that prevent tampering and/or indicate when tampering has occurred.



### **B2.1.6 Labelling of Water Meter**

The meter must have a clearly identifiable manufacturer's serial number securely attached to or imprinted on the meter. This should be located in a position that is easily visible when taking manual readings from the meter display unit. Any certification specific to a meter type, such as C-tick certification for an electromagnetic meter, should also be clearly visible.

Some Consenting Authorities may assign an exclusive identification number for each water permit. This number, if assigned, should also be attached to the meter in a clearly visible manner to aid in the identification of the meter.

The meter must also be labelled so as to show the direction of flow, orientation and any other necessary installation information required to achieve the required accuracy.

### **B2.1.7 Element Protection**

Installations should incorporate a degree of environmental protection required to ensure reliable operation in the installation environment. The environmental enclosure rating for the measuring mechanism of the meter should reflect the degree of protection required for the installation environment. Refer to Appendix A for more information on environmental enclosure ratings.

### **B2.1.8 Materials**

The meter should be manufactured from sound, durable, corrosion resistant materials. All parts of the meter in contact with water must be manufactured from materials that are non-toxic and both chemically and biologically inert.

### **B2.1.9 Manufacturer's Guidelines**

The meter must be supplied with an installation instruction manual from the manufacturer. The manual is to detail all installation requirements (e.g. rated operating flow range and conditions) to achieve the meter's stated accuracy and the type of fluid it is designed for. The manual should also detail any maintenance activities required for normal operation (between verification tests), whether a particular maintenance activity requires a certified maintainer, and when metrological performance can be affected by maintenance (and therefore requires recalibration in a laboratory).

The meter should also be supplied with a wet certification from the manufacturer, certifying the accuracy of the meter.

### **B2.1.10 Maintenance**

The meter must be maintained in full accurate operating condition whenever it is in use. Servicing and maintenance of the meter must always be performed in accordance with the manufacturer's specifications. Any servicing that will affect the accuracy of the meter must be undertaken by a service provider approved by the meter manufacturer or agent.

Water permit holders must retain copies of maintenance records as evidence of the service record of the meter. These must be made available for inspection when requested.

## **B2.2 WATER METER SELECTION**

### **B2.2.1 Suitable for Specific Requirements**

When selecting a meter, it is important to consider both the quality and quantity of the water that it will be measuring. Regulations require that the meter used in the measurement of water take is suited to the water type. During normal operation, the meter must be capable of maintaining the required accuracy for the expected water quality (temperature/algae content/sediment content/mineral content) and range of flow rates it is being used for. Any expected or known flow disturbances should not cause the accuracy to deteriorate beyond the approved accuracy range of the meter.

### **B2.2.2 Life-cycle Costs**

It is recommended that the permit holder consider full life-cycle costs of the meter, not just the initial capital costs, when selecting a water meter. Life-cycle costs refer to the total cost of ownership over the life of the water meter. This includes the costs of operation (electricity/batteries etc.), maintenance, inspection/verification and replacement/renewal costs in addition to the capital cost of the meter and its installation.

The costs incurred during the life-cycle of a water meter depend on the meter type and its specific installation parameters (location, water type etc.). The life-cycle costs can therefore vary greatly. Furthermore, different water meter technologies have different typical service lifetimes. When considering these, the permit holder should consider the term of the water permit, and the likelihood of the permit being renewed after the current term expires.

### **B2.2.3 Water Meter Types**

There are many types of water meter that meet the technical requirements specified in this guidance document. This section outlines the common types of water meter used to monitor flow in full pipes. The purpose of this section is to give a general overview of common meter types. It is not intended to replace technical information or advice given by manufacturers or suitably qualified professionals.

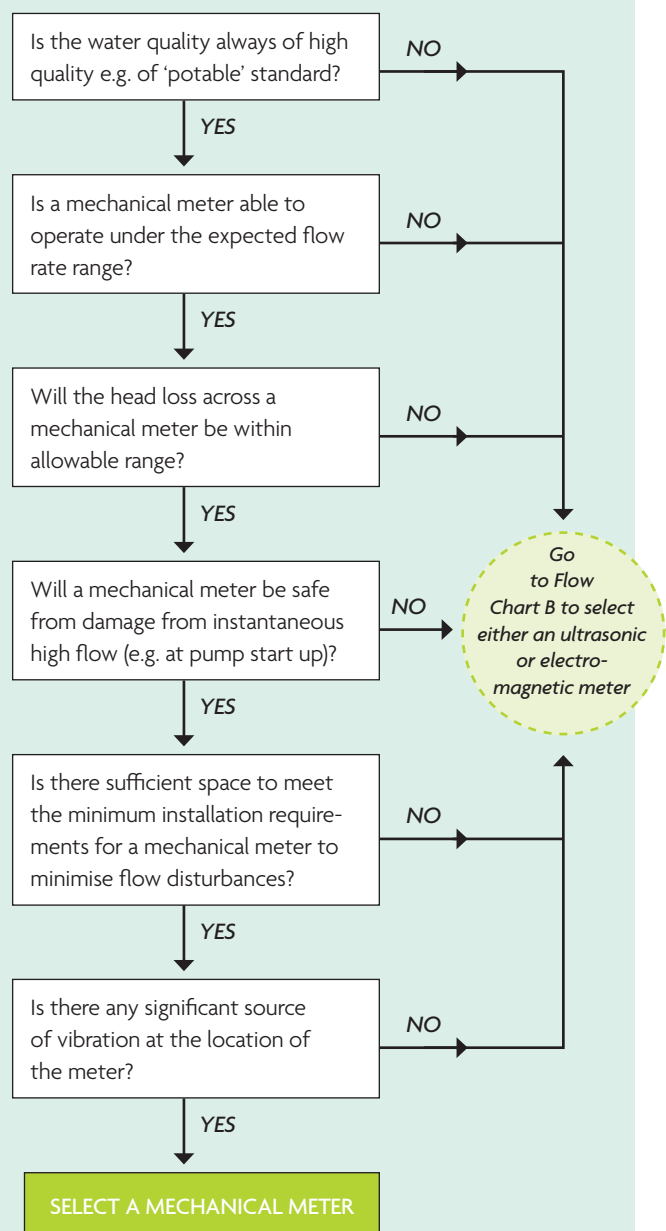
Table 2, on the following page, provides a general description of common meter types, and advantages and disadvantages of them.

Table 2: Common water meter types

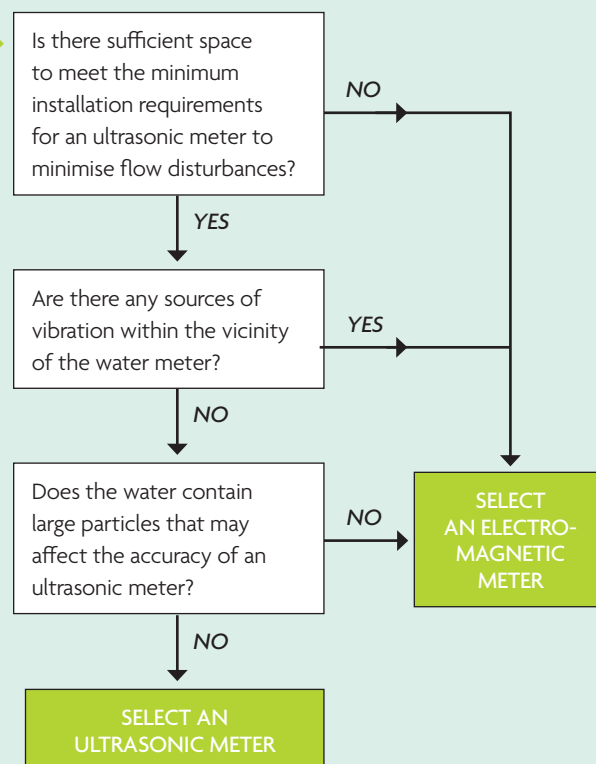
Meter Type	Description	Advantages	Disadvantages
<b>Helical Vane (Mechanical)</b>	A multi-bladed impeller with helical shaped blades is positioned with the axis of rotation aligned with flow. Rotation of the impeller/vane triggers a magnetic counter to record flow rate.	<ul style="list-style-type: none"> <li>Fully tested replacement mechanisms usually available.</li> </ul>	<ul style="list-style-type: none"> <li>Bearings wear if the water is not clean.</li> </ul>
<b>Single/Multi Jet (Mechanical)</b>	Single or multiple ports surrounding an internal chamber create a jet/s of water against an impeller. The impellers rotation is related to the flow rate.	<ul style="list-style-type: none"> <li>Suitable in situations where meeting minimal pipe lengths is difficult.</li> <li>Suitable for low flows.</li> </ul>	<ul style="list-style-type: none"> <li>Bearings wear if the water is not clean.</li> <li>Internal strainer usually required to prevent clogging of the jet port/s.</li> </ul>
<b>Positive Displacement/ Volumetric (Mechanical)</b>	The water physically displaces a moving measuring element in direct relation to the amount of water that passes through the meter. The measuring element (piston or disk) moves a magnet that drives the register.	<ul style="list-style-type: none"> <li>Suitable in situations where meeting minimal pipe lengths is difficult.</li> <li>Suitable for low flows.</li> </ul>	<ul style="list-style-type: none"> <li>Impurities in water cause wear to the chamber, affecting the accuracy of the meter.</li> <li>Chambers require calibration and replacement over time.</li> <li>Head loss across the meter can be significant.</li> </ul>
<b>Electro-magnetic Meters (Mag-flow meter)</b>	Use the physics principle of Faraday's Law of Induction to measure flow within a pipe. A sensor creates a pulsating, alternating magnetic field on the inside of a pipe. The liquid in the pipe moves through this magnetic field and generates a signal current proportional to its velocity.	<ul style="list-style-type: none"> <li>Not damaged by dirty water, stones or grit as has no moving parts in flow stream.</li> <li>No (or low) head loss across meter.</li> <li>Can be used on wide range of pipe sizes.</li> </ul>	<ul style="list-style-type: none"> <li>Mains power source or long life batteries required.</li> <li>Sensitive to 'electrical noise'.</li> <li>Mag-flow meters encompass a section of the same diameter as the pipe work in which they are being installed, they can therefore be costly in large pipes.</li> <li>Some are not tamper proof.</li> </ul>
<b>Electro-magnetic Insertion Meters</b>	The electromagnetic insertion meter uses the same principle as the mag-flow meter described above to measure flow.	<ul style="list-style-type: none"> <li>No (or low) head loss across meter.</li> <li>Unlike electromagnetic meters, the meter does not encompass the full pipe diameter therefore more cost effective in large pipes.</li> <li>No moving parts in flow stream.</li> <li>Meter is easily removed for calibration or cleaning.</li> </ul>	<ul style="list-style-type: none"> <li>Mains power source or long life batteries required.</li> <li>Sensitive to 'electrical noise'.</li> </ul>
<b>Reflection Ultrasonic – Doppler</b>	Doppler ultrasonic meters contain a transducer that sends an ultrasonic pulse into the flow stream. Impurities within the flow (such as particles, entrained bubbles) reflect the acoustic sound wave. The meter determines the flow velocity from the velocity of the impurities which is then converted to a flow rate.	<ul style="list-style-type: none"> <li>Not damaged by dirty water, stones or grit as no part of the meter is located within the flow stream.</li> <li>Clamp-on models attached to the outside of the pipe work making access for maintenance and verification easy.</li> <li>Can be used on large diameter pipes.</li> </ul>	<ul style="list-style-type: none"> <li>Mains power source or long life batteries required.</li> <li>Cannot be used in very clean water.</li> <li>Fluctuating water quality (e.g. varying particle sizes or concentrations) can introduce errors to the measurement.</li> <li>Pipe material may interfere with the measurement if clamp-on meter used.</li> </ul>
<b>Transmission Ultrasonic – Time Transit</b>	Transmission ultrasonic flow meters measure flow velocity (and flow rate indirectly) by directing ultrasonic pulses diagonally across the pipe both up and downstream. The meter measures the difference in time required for the signal to travel through the moving water and converts it to flow velocity.	<ul style="list-style-type: none"> <li>Not damaged by dirty water, stones or grit as no part of the meter is located within the flow stream.</li> <li>Clamp-on models attached to the outside of the pipe work making access for maintenance and verification easy.</li> <li>Can be used on large diameter pipes.</li> </ul>	<ul style="list-style-type: none"> <li>Mains power source or long life batteries required</li> <li>Pipe material may interfere with the measurement if clamp-on meter used</li> <li>Transducers can be dislodged if not properly protected.</li> <li>Couplant solution between the transducers and the pipe will deteriorate rapidly if exposed to the weather and requires frequent replacement.</li> <li>Verification required at more frequent intervals.</li> </ul>
<b>Insertion Paddle Wheel (Mechanical)</b>	An insertion paddle wheel flow meter uses a paddle wheel, inserted into the pipe, perpendicular to the flow direction. A sensor detects the passage of magnets located on the paddle wheel rotor blades, from which the flow is determined.	<ul style="list-style-type: none"> <li>Relatively easy to install in existing pipe systems.</li> <li>Stones/grit can pass under the paddle wheel.</li> <li>Can be used in large diameter pipe work.</li> </ul>	<ul style="list-style-type: none"> <li>Mains power source or long life batteries required.</li> <li>Sensitive to flow disturbances in the system.</li> </ul>

The following flow charts are designed to provide guidance in the selection of a water meter for full pipe systems. It is recommended that permit holders seek specific advice from their relevant Consenting Authority or local supplier prior to the purchase of a water meter.

Flow Chart A – Is a mechanical meter suitable?



Flow Chart B – Is an ultrasonic or electromagnetic meter suitable?



Other considerations for selection of electromagnetic or ultrasonic meters:

- Flow range and accuracy;
- Head loss, particularly if considering a meter size smaller than the pipe work;
- Power source; mains supply or long life batteries;
- Weight of meter;
- Provision for in-situ verification;
- Data acquisition options;
- Skill level required for operation;
- Life-cycle costs for meter purchase, installation and operation;
- Electrical earthing requirements.



## B2.3 INSTALLATION OF WATER METERS

### B2.3.1 Accuracy Limits and Manufacturer's Instructions

The Regulations require a water meter and any ancillary apparatus to be installed such that the meter achieves the required in-situ measurement uncertainty of  $\pm 5\%$  of the actual flow. Therefore, the installer is recommended to take all practicable steps to install the meter in such a way to achieve this accuracy or any more stringent accuracy required by consent condition.

To ensure measurement accuracy, any operational limitations identified by the manufacturer with respect to the in-situ conditions (pipework configuration and water quality, etc.) shall be complied with.

### B2.3.2 Minimum Installation Requirements

Flow disturbances can have a significant effect on the measurement accuracy of a water meter. Flow disturbances can be caused by proximity to pumps, elbow bends, valves and changes in pipe size. Where possible, components that might cause flow disturbances shall be either eliminated or installed downstream of the water meter installation. In some cases, this will not be practicable; therefore, specific attention will have to be given to minimise any possibility of flow disturbances affecting the accuracy of a water meter.

If a component that causes flow disturbance cannot be eliminated or installed downstream, a minimum length of straight pipe before and after the water meter is considered necessary to minimise the effect of the flow disturbance on a water meter.

The water measuring device/water meter shall be installed as per manufacturers specifications. These will provide the minimum lengths of straight pipe required for that meter.

These minimum straight pipe lengths refer to straight, clean lengths of pipe of uniform cross-section that have the same nominal diameter as that of the meter and have no fittings or obstructions.

It is important to note the conditions of the consent and if they state a more stringent requirement for straight pipe before and after the meter you will either need to follow the consent conditions or seek the consenting authorities approval for a variation.

Other configurations which do not meet the minimum straight pipe lengths may be acceptable. If another configuration is to be used, written confirmation from the manufacturer of the water meter that the meter will operate to the required accuracy under the revised in-situ conditions is required.

A water meter should not be installed in any configuration in which the required in-situ accuracy cannot be achieved or accuracy adequately verified.

Where installing a meter of the same diameter as the pipe work is impracticable, it is acceptable to install a meter with a smaller diameter than the pipe work (e.g. a 50mm diameter meter into 80mm diameter pipe-work) using reducers with the correct tapers. To minimise flow disturbance, industry best practice requires the installation of a meter with a smaller diameter be conditional on:

- The use of a 6 to 1 ratio taper followed by a minimum straight pipe length equivalent to 10 times the pipe DN on the intake side of the meter;
- The use of a minimum straight pipe length equivalent to 5 times the pipe DN on the discharge side of the meter followed by a 6 to 1 ratio taper back to the existing pipe work; and
- The flow must still be within the specified flow parameters of the meter.

A water meter may be fitted onto a vertical pipe work (as usually found in wells) provided it is certified for that purpose by the manufacturer of the meter endorsing its installation on upward flow direction.

In circumstances where the meter is not located at a fixed point and is used in conjunction with a portable pump, the meter and associated pipe work must be connected to the pumping equipment when in use, but may be disconnected during relocation. However it is preferable the pipework is fixed to eliminate vibration and bumps which could affect the meters accuracy.

### B2.3.3 Future Verification Requirements

Verification must be carried out by a suitably qualified person. This is to be performed on-site or at an accredited laboratory with permission from the Consenting Authority. If the meter is verified in a laboratory, the verifier may require that the minimum upstream and downstream pipe work lengths required to minimise flow disturbances in the configuration (as set out in Section B2.3.2), are also dismantled and used in the laboratory verification.

It is therefore necessary to consider the practicalities of the verification process of a water meter when selecting the installation and pipe work configuration.

The meter installation configuration (including any enclosure) must also allow removal and dismantling of the meter for inspection of the internal components by the verifier to ensure ongoing compliance.

Replicating the true in-situ conditions in a laboratory may be difficult therefore on-site verification is recommended.

The following are possible arrangements that could be installed with a water meter installation to allow for future in-situ verification testing:

- Flow diversion devices to allow water to run through an independent meter (i.e. an appropriately sized, dedicated discharge point downstream of the meter);

- A section of suitable pipe to allow the appropriate use of a portable clamp-on independent meter;
- A section of pipe with flanges to allow an independent meter to be inserted in-line; or
- A valve to close off the downstream system and an outlet to allow the 'known volume' (on-site volumetric or gravimetric method) system to be used.

#### **B2.3.4 Installers, Maintainers and Accreditation**

Although the Regulations do not require that a suitably qualified person or accredited company is used for the installation or maintenance of a water meter, it is recommended that such people are used for these tasks and may also constitute a consent requirement.

Suitably qualified persons undertake competency based assessment which consists of basic training and workplace workbook based assessment via NZQA unit standards. The Blue Tick Accreditation program provides the permit holder with an assurance that a meter installed or maintained by the accredited company, will be done so in a way that complies with the requirements of the regulations and consent conditions.

For all Accredited Installation Service Providers, the installation must be supervised or signed off by a person that holds the NZQA unit standard 27445 – *Select, install, and commission a water meter for full pipe water abstraction*.

The installation configuration of a water meter installed by an accredited company must still be verified by a suitably qualified verifier as meeting the required accuracy as per the regulations. While it is good practice to test the accuracy of the meter prior to any water being taken, the regulations only require the meter be verified prior to the end of the meters first water year.

#### **B2.3.5 Installation Considerations**

The installer should carry out adequate pre-installation site investigation and post-installation site reinstatement to ensure the water meter operation and accuracy is not compromised. Practicable precautionary consideration must be taken in the installation to prevent damage from sources such as the following:

- vehicles, livestock, vandalism, and flooding;
- unfavourable hydraulic conditions (cavitation, surging, water hammer)
- shock or vibration induced by the surroundings;
- undue stresses caused by misaligned or unsupported pipes or fittings;
- aggressive environmental conditions (e.g. corrosive);
- possible electrical interference from electric fencing, overhead power lines or pipe system components such as variable speed drives (VSDs); and,
- extremes of temperature of the water or ambient atmosphere.

The following should also be taken into consideration by the installer:

- Is the location able to provide easy access to telecommunications to allow the transfer of water take data daily?
- The meter must not be installed in a section of pipe where there may be air pockets or the pipe does not run full of water. If it is likely that air will become entrapped near the meter, then an air valve must be installed.
- A meter approved for operation in full flowing pipes, shall be installed so that it is completely filled with water under all conditions during operation. Non-pressurised systems may require elbows or pipe elevation to ensure that this requirement is met.
- Any filtering, straining or screening equipment, if installed, must be installed on the intake side of the meter.
- Any backflow prevention devices, if installed, must be installed on the discharge side of the meter.
- Any chemical injection system, if installed, must be installed on the discharge side of the backflow prevention device.
- A meter may be fitted on the suction side of a pump provided that it is certified for that purpose by the manufacturer of the meter.
- The meter must be installed in the correct direction of flow.
- Where the meter is to be fitted to polyvinyl chloride (PVC) or polyethylene (PE) pipelines, it must be supported by a concrete thrust block or fabricated steel bracing to ensure stability.
- In accordance with current consent conditions.

#### **B2.3.6 Location of Water Meter**

The water meter location must be selected with consideration to the following:

- Meters must be located at the location from which the water is taken under the permit, or if approved by the consenting authority (Regulation 10), as near as practicable to that location.
- There must be no off-take (except those for permitted water takes e.g. domestic, stock water and fire-fighting), diversion or branch between the meter and the location from which the water is taken under the permit.
- The meter must be mounted in a way that allows for both easy access and manual reading of the display unit (without, for example, the use of a mirror or ladder).
- The meter must be installed in a location that allows for verification of the meter to occur in-situ or for the meter to be readily removed to be transported to a laboratory for verification.

NOTE: For sites of take which have no permanent infrastructure, please see Section E Portable Pumps.

The preferred location of all meters is above ground. However, in instances where a meter needs to be installed below ground level, the following must be considered:

- The correct IP rated meter is selected for subsurface use.
- It shall not be installed deeper than 1.5m below ground level;
- There must be sufficient space to facilitate easy access for maintenance, inspection and reading at all times;
- Meters located up to 0.5m below ground level must be housed in a suitable meter box to protect the meter whilst still allowing full access to the meter;
- Meters located between 0.5m and 1.5m below ground level must include a suitable access pit;
- There must be no risk of water collecting in the access pit/meter box. Measures must be taken to prevent the ingress of surface water and/or provide adequate draining of the access pit or meter box. Such measures could include a concrete apron graded away from a secure lid;
- The access pit/meter box must be secure against the ingress of groundwater; and
- Any meter located below ground which meets the definition of a confined space shall be installed so as to comply with AS/NZS 2865: Confined Spaces.

#### **B2.3.7 Site of Water Meter and Safety**

The meter must be accessible at all times to allow for manual reading, inspection and verification. The installation of the meter shall include the consideration of protective devices and fittings for the protection of the equipment, operators, the public and the environment from damage and harm.

#### **B2.3.8 Electrical Standards**

Where a mains electricity supply is connected to the meter or to any ancillary apparatus, the installation works must comply and be operated with the relevant New Zealand electrical standards and any associated requirements.

If a meter relies on mains power source it must be hard wired to a dedicated circuit to ensure that the power supply is as tamperproof as practicable.

#### **B2.3.9 Commissioning**

Commissioning shall be conducted by the installer to ensure that the meter is ready for verification and subsequent use. The commissioning procedure will include the following checks:

- Check that all components have been installed according to the specific manufacturer's installation requirements;
- Check that there are no leaks in the installation;
- All tamper seals are fitted;
- Check that required calibration (if any) has been completed;
- Check that all components are sufficiently protected from damage; and
- Check that the installation is in accordance with any more stringent requirements of the consenting authority.
- Check that the meter is working correctly, that is, display is on (if has one), no error displayed, device is reading
- Check that the meter has an electronic output that corresponds with the recording device
- No interference is occurring ie VSD, electric fencing etc.
- Run water through meter and compare with reference meter.

#### **B2.3.10 Maintenance Requirements**

The meter installation configuration must allow for maintenance. The meter and its ancillary equipment must be periodically maintained over its working life such that there is an acceptable level of confidence that the meter continues to operate within its permissible in-situ measurement uncertainty of  $\pm 5\%$  of reading. The Consenting Authority may ask for a maintenance plan to be developed based on the manufacturer's recommendations and submitted for approval.

If the maintenance activity undertaken was identified by the manufacturer as affecting the metrological performance of the meter, then the meter must be recalibrated in a laboratory. If the maintenance activity undertaken interferes with the installation configuration, then in-situ re-verification is required.

Preventative maintenance generally includes checking the structural integrity of pipe-work and fittings, an assessment of components for wear or damage, and replacement of components at the appropriate time.

The details and findings of any maintenance/inspection works that affect the metrological performance shall be provided to the regulatory authority by the service provider. A copy of the logbook shall be kept as some Consenting Authority's may request to view it.



### B2.3.11 Submission of Installation Report

Upon completion of the meter installation, the installer should submit the following installation information to the relevant Consenting Authority to aid in record keeping:

- A report providing specifications of the meter installation, signed by the installer;
- A detailed as-built diagram and photograph of the installation configuration, including dimensions and verification facilities provided;

Refer to the specific Consenting Authority's forms, alternatively the report should include the following information as a minimum:

- The installer organisation's name, address and contact phone numbers
- Installation date;
- The make, size, type, and serial number of the meter;
- The make, size, type of any datalogger and/or telemetry equipment if installed,
- Permit holder's name;
- Consent name and/or consent number/identifier number.
- Meter location description including Global Positioning System (GPS) coordinates;
- Name and signature of the installer; and
- Any other information requested by the Consenting Authority.

### B2.3.12 Installation and commissioning of telemetry equipment

Many telemetry systems have the ability to check data while the installer/verifier is on site. So as long as the installer/verifier has cell phone coverage there will be no problem in confirming the system is recording/transmitting data to the host.

Telemetry units must also have loggers with enough storage to store at least one month of data. This is to ensure any data that isn't transmitted due to failed connections or other circumstances is not lost and can be retrieved manually.

Loggers that are plug-and-play sealed units are pre-programmed in the office to send data once a day to the host. This preserves the battery life. These units can be forced online by the installer, so there should be no problem with ensuring data is being received by the host before the installer leaves the site.

There are times where final commissioning cannot be carried out on the day (e.g. the river is in flood so the installer cannot pump water) and therefore a second site visit may be required. Core information to be gathered during commissioning is for the installer to take meter readings before and after pumping. It is recommended to conduct both a short term and long term test.

Short term is to observe the meter and logger totals over 10 or so minutes and ensure that ALL counts are recorded. Long term is to get Consent holder to ring through a meter total after a pumping period or on the hour (recording interval of the logger) and then compare the change in totals from the last observation. (NEMS 1% tolerance). Also advocate an annual site inspection to compare the totals.

Closing the loop between the Consenting Authority and data host and installer should be case of an email to confirm data is received and in the correct format. Photos of meter readings will confirm the volume of water pumped during commissioning.

Checklist for installation and commissioning of telemetry equipment (and associated logger):

- Certify that the data logger has been installed in accordance with manufacturer's specifications;
- An as-built diagram of the installation is included;
- Digital photos of the installation, including meter total and the time of photo;
- Data host identified and confirmed;
- GPS location;
- Confirm pulse rate of meter;
- If wet commissioned, time of test start and finish recorded in NZST along with the volume passed through the meter;
- All cable joins are sealed from the elements and tampering;
- Cables have sufficient shielding to protect from electrical noise (need electrician's advice);
- All units are earthed/bonded properly;
- Aerials are installed as high as possible and away from vegetation;
- All infrastructure is secure from animals.

## **B2.4 VERIFICATION OF ACCURACY**

### **B2.4.1 Purpose of Verification**

Verification gives certainty that a water meter meets the accuracy standard required in the Regulations, i.e. the in-situ determination of water volume must have a maximum permissible error of  $\pm 5\%$  of reading for the full operating flow range and conditions.

### **B2.4.2 Required Verification Frequency**

The installed meter must be independently verified at the times stipulated in Consenting Authority's policy or as stated in the Regulations, i.e. initially after installation, and then every 5 years or as stated on the permit.

The accuracy of all water meters must be verified every 5 years by a suitably qualified person. This is to be performed on-site or at an accredited laboratory with permission from the Consenting Authority. If the meter is verified in a laboratory, the verifier may require that the minimum upstream and downstream pipe work lengths required to minimise flow disturbances in the configuration (as set out in Section B2.3.2), are also dismantled and used in the laboratory verification.

### **B2.4.3 Approved Verifiers**

Verification of the meter must be carried out by a person, who in the opinion of the relevant Consenting Authority that granted the water permit, is "suitably qualified" to verify the particular meter.

The verifier can be part of the relevant Consenting Authority or an external organisation, provided that the criteria are met.

For Blue Tick Accreditation, a suitably qualified person is someone that holds the NZQA unit standard 27556 – *Select, perform and report on a full pipe water measurement system verification*. The accredited verification service provider should be registered with the Consenting Authority as part of the accreditation application process of that region. Although the company holds the accreditation, only their staff who are suitably qualified (hold the unit standard) can undertake verifications.

### **B2.4.4 Verification Equipment**

The equipment used for verification must be suitable for the use of verifying the accuracy of water meters. For best practice the verification device must have a greater or equal accuracy to the meter being verified.

The reference devices used for verification must also be:

- Calibrated and certified annually to within a known measurement error that is no more than  $\pm 2\%$  of reading. This must be completed by an ISO17025 accredited laboratory.
- Installed as per the manufacturer's specifications.
- Operated by a "suitably qualified" person registered with the Consenting Authority.

For flow rigs the whole rig must be sent and not just the water measuring device (water meter) during the commissioning process of the rig.

During the four subsequent years, the meter only can be sent to an ISO17025 accredited laboratory to be calibrated and verified to have a known measurement error that is no more than  $\pm 2\%$

On the fifth year, it is expected that the whole rig is sent to an ISO17025 accredited laboratory to be calibrated and verified to have a known measurement error that is no more than  $\pm 2\%$ .

If at any time the meter is found to have become inaccurate it will be replaced or if the headworks is modified the whole rig is to be sent to an ISO17025 accredited laboratory to be calibrated and verified to have a known measurement error that is no more than  $\pm 2\%$  for re-commissioning.

### **B2.4.5 Verification Test Flow Rate and Replication**

The verification test should be conducted for the typical flow rate of the system with a minimum of 3 replicates. If the systems is run at a range of flow rates then the replicates should include:

- Low – The minimum flow rate the water meter is required to perform at to within  $\pm 5\%$  of reading.
- High – The maximum flow rate the water meter is required to perform at to within  $\pm 5\%$  of reading.
- Medium – Halfway between the low and high flow rates.

The maximum flow rate to which the meter is required to perform is equal to the maximum water take system capacity.

### **B2.4.6 Verification Test Volume and Duration**

A meter test must not exceed 90 minutes in duration and typically each test should be run for a minimum of 10 minutes at a steady flow rate. However, some Consenting Authorities will allow an initial run of 10 minutes and replicates at 5 minutes in some cases if the shorter time will not impact the test uncertainty. Check with the Consenting Authority to confirm their minimum run time.

Ultimately, the verification test volume and duration should be sufficient so that they do not influence the test uncertainty.

### **B2.4.7 General Inspection**

For all meters, it is suggested that the verification includes the following inspection steps (as appropriate) to ensure that the meter measurements are reliable:

- Check that the meter is used in an appropriate manner;
- Check that the totaliser is non-resettable;
- Check maintenance records;
- Check that the readings on the display are clearly visible and unambiguous;

- Check for evidence of interruption of signal transfer between the measurement component and the recording component where data loggers or telemetry are in use;
- Check that power supply is reliable (e.g. if the meter uses batteries, then the expected replacement date are marked and not yet due);
- Check that tamper-proof seals are in place and unbroken;
- Check that there are no leaks that bypass the measuring point;
- Check for scaling or build-up of calcium, iron oxide or iron bacteria;
- Check that environmental element protection from weather and other damage are adequate;
- Check that meter usage is within stipulated design life (e.g. years, cumulative volume, etc.).
- Check that the meter installation complies with consent conditions.

#### B2.4.8 Verification Report

A verification report shall be issued by the approved verifier for all meters verified. The Consenting Authority may request a copy of this for its own records. Check with the relevant Consenting Authority before undertaking the verification.

The verification report shall have as a minimum:

- The verifier organisation's name, address and contact phone numbers;
- Verification date;
- The make, size, type, and serial number of the service meter;
- Permit holder's name;
- Permit Identifier;
- Meter location description, including Global Positioning System coordinates (optional);
- Meter reading (m) prior to verification;
- Meter reading (m) after verification;
- Flow rates tested and individual accuracy requirement compliance/non-compliance for each flow rate;
- Verification test procedure including all input data as applicable, for example pipe thickness, water temperature;
- General inspection notes;
- Confirmation that the reference device is currently certified. Information such as a calibration reference number and details of the reference meter including make, model and serial number, is available on request;
- Photographs of the verification meter installation and
- Name and signature of the verifier.

#### B2.4.9 Verification Methods

An outline of the methods which may be used for verification is shown below. Not all of these methods are acceptable by Consenting Authority's in New Zealand. A table of which verification methods are acceptable to each Consenting Authority is provided in Appendix D. The verifying contractor should consult the Consenting Authority in the area(s) in which they intend to operate and clarify which methods of verification are acceptable.

##### Ultrasonic Clamp-on Meter

The ultrasonic clamp-on flow meter is a non-invasive device used to measure full pipe flow in closed conduits. These meters are unique in their ability to measure flow with little or no modification to existing pipe configuration although they do require sufficient straight lengths of pipe for accurate results and are sensitive to the flow regime of the system. They are used extensively in the water industry to provide measurements where there is no permanently installed meter and to verify the accuracy of permanently installed meters.

Clamp-on ultrasonic meters, if used correctly, can be used at any flow rate.



Image: A clamp-on ultrasonic meter is installed on the length of pipe, the transducers are strapped onto the pipe at a spacing determined by the meter after considering the installation parameters.



### Reference Meter In-Series (In-line or Bypass)

A reference meter placed in series with a service flow meter is an effective in-situ verification method. With this technique a reference meter is brought to site and fitted to the service meter installation pipe work (either in-line or through a bypass after the service meter). The reference meter can also be located somewhere in the pipe system where hydraulic conditions are favourable. The use of purpose built “flow rigs” is the preferred method of verification for many Consenting Authorities when using this technique.

Depending on the design of the flow rig (the size and type of reference meter being used and stability of the rig) these rigs may not be suitable across all flow rates.



Image: An example of a simple flow rig design. The meter is in its own permanent headworks and installed to minimum of manufacturers specifications.

### Volumetric and Gravimetric

These techniques involve either;

- The collection of an amount of liquid (weight or volume) in a tank within a certain time interval; or
- Passing a known amount (weight or volume) through the service meter and recording the time period taken for this to occur.

The first method is accurate, but of limited practical use as it is only suitable for very low flow rates, typically under 1L/s (the Regulations apply to takes of 5L/s and above). A detailed description of this method is provided in ISO 8316 – “*Method by collection of the liquid in a volumetric tank*”.

The second method will likely be commonly used by the municipal water supply industries as storages of known volume and with level sensors, are frequently part of delivery system design.



Image: A vessel which has been calibrated using scales/weight to ascertain its volume. Suitable only for very low flows and meters with low units – 1 litre or less resolution.

### On-site Electronic Validation

The on-site electronic validation method is available for a number of electromagnetic water meters. It validates the current functionality of the meters internal properties (transmitters, insulation integrity, magnetism, and digital and analogue output test) in relation to the original factory settings (the meters properties at the time of wet test certification).

However, despite being an excellent method for trouble shooting potential errors with the water meter itself, it does not provide certainty that installation is within  $\pm 5\%$  as required by the regulations. Therefore, electronic validation as a standalone method is not suitable for initial verification and must be done in conjunction with a comparative meter. However providing there have been no changes to the pump, head-works and distribution system it is suited for use as an on-going verification mechanism.

### Tracers

For the tracer method a pulse of tracer fluid is injected into the main flow stream and the time taken for the tracer to pass between two detection points is measured. The fluid flow rate is a function of the tracer injection rate and its downstream concentration. A detailed description of transit-time and the dilution methods is provided in ISO 9555.

Table 3: Verification Method Advantages and Disadvantages. Refer to Appendix D for methods accepted in the different regions.

Meter Type	Advantages	Disadvantages
<b>Ultra-sonic Clamp-on</b>	<ul style="list-style-type: none"> <li>• Eliminates in-line installation.</li> <li>• One meter can be used at many locations.</li> <li>• Non-invasive installation eliminates pressure losses.</li> <li>• Prevents leaking associated with in-line meter installations.</li> <li>• Portable.</li> <li>• Can be installed almost anywhere.</li> <li>• Does not require a field calibration.</li> </ul>	<ul style="list-style-type: none"> <li>• Good installation conditions necessary</li> <li>• Electronic technician required to troubleshoot and service</li> <li>• Must be configured for pipeline material, diameter and wall thickness.</li> <li>• Internal pipe conditions are often unknown.</li> <li>• Turbulence and/or suspended sediment affect the acoustic signal strength.</li> <li>• Needs precise geometry and dimensional data for the clamping arrangement and pipe, plus the speed of sound in the wedge, the pipe wall and the fluid.</li> <li>• Requires a correction factor to allow for variation in the flow profile.</li> <li>• Signal attenuation due to liner separation or scaling.</li> <li>• Verifier needs training to be competent in meters use.</li> <li>• Not accepted by some Authorities without prior approval.</li> <li>• Water temperature must be known for accurate results.</li> </ul>
<b>Reference Meter In-Series</b>	<ul style="list-style-type: none"> <li>• Can be relatively quick if field installation is configured to accommodate the reference meter or there is an alternative location away from the service meter where the pipe work is adequate and no losses or leaks are present.</li> <li>• May provide an opportunity to inspect the condition of the pipe internal surface.</li> <li>• High accuracy and controlled method.</li> <li>• Independent test as not reliant on the head works setup.</li> </ul>	<ul style="list-style-type: none"> <li>• Requires an installation that can accommodate the reference meter (in-line or bypass). Retrofitting may be required.</li> <li>• Good installation procedures and techniques are required to stop interference by the reference meter to the field meter if in-situ.</li> <li>• Leaks can be introduced at the connection point if not installed correctly.</li> </ul>
<b>Volumetric and Gravimetric</b>	<ul style="list-style-type: none"> <li>• Method suitable for small volumes and low flow rates only.</li> <li>• Can be used on gravity set ups where other methods may not be possible.</li> </ul>	<ul style="list-style-type: none"> <li>• Not suitable for high flow rates – particularly set time and volume method.</li> <li>• Potentially large errors associated with measurements depending on tank characteristics, level measurement and water temperature.</li> </ul>

#### B2.4.10 Verification Method Error and Uncertainty

Verification is carried out to verify that meter readings are an accurate record of the actual water flowing through the meter. Central to the verification process is the interpretation of the meter's accuracy from the results of the verification tests.

The verifier will need to identify all sources of error and uncertainty in the reference measurement and method employed, including the certified error of the reference meter (no more than  $\pm 2\%$ ), environmental/pipe conditions, and inaccuracy in any input values.

There is much complexity and subjectivity in calculating uncertainty for the verification of full pipe water measurement. Many factors are unable to be easily or practically determined in-situ and a sound knowledge of statistics is also required.

Refer to Appendix C for more information on understanding and calculating verification error and uncertainty.

#### Ultrasonic Clamp-On Meter

A range of issues need to be considered when assessing the accuracy of ultrasonic clamp-on flow meters.

Accuracies between  $\pm 2$  to  $\pm 5\%$  (NEL 2002) are achieved when devices are installed properly and carefully set up in suitable flow conditions. While there are many sources of error, the three key ones are; the pipe's internal diameter, the flow velocity profile, and acoustic interference. Under adverse conditions, these and other factors can result in poor accuracies of between  $\pm 5$  and  $\pm 10\%$ .

To minimise uncertainty it is desirable to have 30 pipe diameters in length of straight-pipe section upstream of the clamp-on meters to ensure a well-developed flow profile, however such an approach would be impractical and costly. Since 30 pipe diameters are rarely used in installations at least 10 straight diameters free of obstructions upstream and at least 5 straight diameters free of obstructions downstream from the meter is recommended.

A common problem in irrigation meter installations is that an upstream unobstructed, straight pipe length cannot be achieved and metering is often performed in a non-ideal piping configuration. Eisenhauer (2008) from University of Nebraska recommends the use of a bias correction to find a more accurate flow rate in the circumstances where the ultrasonic clamp-on meter must be installed closer than 10 diameters.

The following is a list of issues that need to be considered when assessing the accuracy of ultrasonic clamp-on flow meters.

- Determination of internal pipe diameter
- Ovality error
- Pipe roughness error
- Flow disturbance error
- Minimising errors due to distorted velocity profiles
- Water temperature
- Other verification options
- Data collection
- Reference meter in-series (in-line or bypass)
- On-site volumetric or gravimetric method

A standard uncertainty of  $\pm 3\%$  is to be applied when using clamp-on ultrasonics. If a greater degree of uncertainty is thought to influence the reference measurement then the verifier must undertake the uncertainty calculations and demonstrate this.

### Reference Meter In-Series (In-line or Bypass)

The use of purpose built test rigs is the preferred method of verification by many Consenting Authorities when using this verification technique. The meter is installed in a permanent headworks and the whole rig is sent to an ISO17025 accredited laboratory to be calibrated and verified to have a known measurement error that is no more than  $\pm 2\%$  during initial commissioning.

During the four subsequent years, the meter only must be sent to an ISO17025 accredited laboratory to be calibrated and verified to have a known measurement error that is no more than  $\pm 2\%$ . On the fifth year, it is expected that the whole rig is sent to an ISO17025 accredited laboratory to be calibrated and verified to have a known measurement error that is no more than  $\pm 2\%$ .

If at any time the meter is found to have come inaccurate it will be replaced and the whole rig is sent to an ISO17025 accredited laboratory to be calibrated and verified to have a known measurement error that is no more than  $\pm 2\%$  for re-commissioning.

Any leaks between the in-situ meter and the reference meter will also introduce error and should be taken into account in any error correction calculations and the uncertainty of the measurement. If the leak is anything more than minor, then the test method will need to be reviewed.

If the correct methodology is employed there is limited human error that can be introduced to the test.

Incorrect reading of the meters when taking readings for comparison to limit this it is recommended that a start/stop

method be employed when taking readings from the two meters for comparison. This removes any human error in timing readings and removes the need to factor this into any uncertainty calculation.

The following is a list of issues that need to be considered when assessing the uncertainty of the flow rigs measurements.

- Leaks
- Air relief valves
- Time
- Resolution of the fixed meter
- Accuracy and resolution of the test meter

A maximum *uncertainty* of  $\pm 1\%$  for the measurement is allowable using flow rigs. If using an error correction calculation then the maximum of  $\pm 1\%$  *uncertainty* is applied after the error correction has been applied.

Determining a pass and fail will be determined based on  $\pm 5\%$  for the in-situ meter plus the *uncertainty* of the measurement to a maximum of no more than  $\pm 1\%$ .

If the *uncertainty* is higher than  $\pm 1\%$  then the methodology needs to be reviewed and adjusted.

The verifier must, upon request from the Consenting Authority, produce a copy of the verifier's *error* and *uncertainty* calculations to demonstrate they have a maximum *uncertainty* of  $\pm 1\%$  for audit purposes.

A recommended methodology and a template for calculating a test rigs *error* and *uncertainty* is attached as Appendix C.

### Volumetric and Gravimetric

This method uses the collection of an amount of liquid (weight or volume) in a tank within a certain time interval or by passing a known amount (weight or volume) through the service meter and recording the time period taken for this to occur. A detailed description of this method is provided in ISO 8316 – “*Method by collection of the liquid in a volumetric tank*”.

Verifiers using this method should contact the Consenting Authority to seek permission to undertake this type of test and explain the methodology to be used:

- i. The collection vessel to be used and the volume in litres to be collected
- ii. How the comparison vessel or weigh scale has been calibrated
- iii. Actions taken on site to minimise errors.

NOTE: There currently is no standard uncertainty for this test type, it either needs to be calculated using the test methodology you are using or discussed with each individual Consenting Authority if they have their own method of calculating uncertainty for this test type.



### B2.4.11 Verification and Compliance

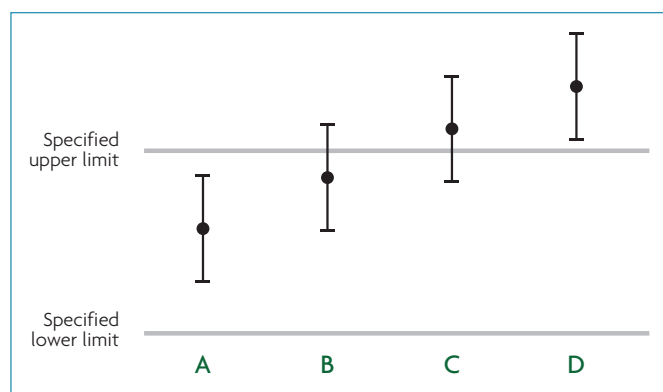
The measurement accuracy of the service meter must be interpreted taking into consideration the error of the test and the uncertainty of the reference measurements. For example, if the verifier ascertains that the reference measurement uncertainty is  $\pm 1\%$  of reading, then the non-compliance with the accuracy requirement for a full pipe test will be identified if the reference measurement is outside  $\pm 6\%$  of the installed meter measurement.

Error is calculated using the following equation if the Consent Authority does not provide a calculation tool.

$$\frac{\text{Test volume} - \text{Reference volume}}{\text{Reference volume}} \times 100 = \text{error/difference\%}$$

Uncertainty of the reference measurements must be taken into consideration when determining non-compliance because the Regulations state that the measurement by the meter must be within  $\pm 5\%$  of the actual volume taken (which is unknown), not of the reference measurement.

Sometimes a result may fall clearly inside or outside the specified limit ( $\pm 5\%$ ), but the uncertainty may overlap the limit. Four kinds of compliance outcome are shown below.



NOTE: The specified upper and lower limit is  $\pm 5\%$  for full pipe systems and for partially full pipe or open channel systems it is  $\pm 10\%$

In Case A, both the result and the uncertainty fall inside the specified limits. This is classed as a 'compliance'.

In Case D, neither the result nor any part of the uncertainty band falls within the specified limits. This is classed as a 'non-compliance'.

Cases B and C are neither completely inside nor outside the limits. No firm conclusion about compliance can be made.

### Failed verifications

Should a meter installation fail a verification:

- Do not adjust the verification results
- The cause for the fail should be identified and corrective action taken (head works altered, re calibration of the existing meter or a new meter installed)
- Once the solution has been implemented the meter will need to be verified again to confirm it is now reporting within  $\pm 5\%$ .

### In-Situ Meter Calibration.

If a maintainer wishes to undertake an in-situ re-calibration of a mechanical meter, explicit permission from the relevant Consenting Authority must be sought before any work is undertaken. Not all Consenting Authorities will allow in-situ calibration as this may not be fixing the reason why the meter failed its verification.

If the relevant Consenting Authority allows this type of work to be conducted then the process of re-calibration would generally occur at the time of verification and involves "fine tuning" the performance of the meter in question and re-verifying to prove the required accuracy standards have been met.

The process of re-calibration must be undertaken by a suitably qualified practitioner using an approved and calibrated verification process.

# References

- Baker, R. C., Moore, P. I. & Thomas, A. L. 2006. *Electronic verification of flow meters in the water industry*. Proceedings of the Institution of Civil Engineers Water Management 159 December 2006 Issue WM4 Pages 245–251
- Bell, S. 2001. *A Beginner's Guide to Uncertainty of Measurement* Issue 2, National Physical Laboratory
- Cape, J., Cook, B., Currey, A., Hassanli, A., Pezzaniti, D., & Turrall, H., 2008, *Measured in-situ Verification of Meters for Non-Urban Water Supply*, CRC for Irrigation Futures National Water Commission
- Eisenhauer, E.D. 2008. *Using Ultrasonic Flow Meters in Irrigation Applications*, Irrigation Engineering. Irrigation Operations & Management, Division of the Institute of Agriculture and Natural Resources, University of Nebraska–Lincoln. <http://extension.unl.edu/publications>
- Livelli, G. 2007. *Verifying Flowmeter Accuracy Calibration Techniques to Ensure Measurement Performance*, National Engineering Laboratory, Project No: FDWM04, Report No: 290/2001 Page 119 of 168
- National Engineering Laboratory, Auditing Water Flow Metering Systems, Project No: FDKT13, Report No: 044/2002
- NMI 2004, *Uncertainty in Measurement: the ISO Guide*, National Measurement Institute Monograph 1: NMI Technology Transfer Series, Ninth Edition, December 2004, author Robin E Bentley
- Sanderson, M.L., Yeung, H. 2002 *Guidelines for the use of ultrasonic. non-invasive metering techniques*, Flow Measurement Instruments., vol. 13, no. 4, 125-142
- SIRA Instrument Test and Calibration. 2005 *Clamp-on Transit Time Ultrasonic Flowmeter Performance Evaluation*, Department of Trade and Industry NMSD Programme for Flow Measurement DTI reference GBBK/C/03/18
- Vel't, I.D. 2004 *Calibrator for studying electromagnetic flow meters by simulation method*. Measurement Techniques, Vol.47, No. 12

# Section C: Water measurement systems for open channels and partially full pipes

---

## C1 Section introduction

### C1.1 SECTION SUMMARY

Measurement of flow in open channels and partially full pipes differs considerably from measurement of flow in full pipes. In general, for water takes in open channels and most partially full pipes:

- Site conditions play a very important part in the determining whether a measurement system is suitable.
- In-situ calibration is crucial to ensure that the system for open channels and partially full pipes can measure to the required accuracy.
- Frequent inspection and maintenance are essential for continued reliable operation.
- Specialist expertise may be invaluable, especially for complex sites.

This guideline document is intended to provide a useful consolidated summary of information about meeting the requirements of the Regulations. Where the requirements of the regulations are discussed, the prescription of measurement methods is intentionally avoided so as to allow for future innovation in measurement methods.

The end of the section contains guidance information on measurement methods that may be suitable for open channels and partially full pipes. While this information can assist permit holders, it is not intended to be a substitute for specific professional advice and installation expertise, especially for complex sites.

Consent conditions should be referred for additional measurement requirements and if the specifications outlined in the NEMS standards are required. This standard will in general require a higher level of accuracy and monitoring than that of the Regulations and detailed in this document.

### C1.2 SECTION STRUCTURE

*Section C* of this document covers water measurement systems for measuring the volume of water abstracted by a method other than by a full pipe, i.e. by open channel or partially full pipe abstraction.

*Section C2* covers the minimum requirements and associated best practice recommendations for all water measurement systems in open channels and partially full pipes. These requirements and recommendations allow for a wide range of site conditions, and for new measurement methods that may be developed in the future. This section is relevant for all permit holders to which the Regulations apply.

*Section C3* then outlines the required verification process which is the primary means of quality assurance and the main process for assessing compliance with the accuracy requirement of the Regulations. All permit holders to which the Regulations apply should be aware of the process involved.

*Sections C4 and C5* contain guidance information on measurement methods that may be suitable for open channels and partially full pipes.

### C1.3 ASSESSMENT OF THE TASK

Open channel flow measurement is generally more complex than full pipe flow measurement because site conditions may have a significant effect. Reliable flow measurement involves carefully selecting a suitable measurement site, constructing and calibrating an appropriate control section (generally with a flow restriction such as a weir or flume) and accurately measuring the upstream water level. It is unlikely that these requirements can be satisfied by the installation of a self-contained, off-the-shelf 'water meter'.

Similarly, water measurement devices suitable for full pipe flow generally cannot be used to accurately measure partially full pipe flow.

The size of the water take (both physical dimensions and expected flow rate range) will affect the choice of water measurement system. No single measurement system would suit every water take. For example, a measurement system for a 5L/s water take may not be suitable for large flow rates used in power generation or an entire irrigation scheme.

All aspects of the measurement system, including its complexity, cost and inspection/maintenance frequency should reflect the size of the take. The larger the water take, the greater the importance of data accuracy, and the greater the risk if the system does not provide information at the scale and resolution required.

#### **C1.4 THE NEED FOR SPECIFIC CONSIDERATIONS**

Because every open channel water take is different, the water measurement system must be tailored to meet the specific characteristics and requirements of the water take. Selection and installation of a measurement system without first considering these specific site issues is unlikely to provide an acceptable water measurement system.

Four key steps are required before choosing and installing a measurement system:

1. Check the flow rates and conditions stated in the water permit issued by the relevant Consenting Authority;
2. Check any related water measurement requirements from the relevant Consenting Authority (the Regulations allow more stringent requirements to prevail);
3. Check Section C2 of this document for minimum requirements based on the Regulations; and
4. Perform a thorough site investigation.

Requirements issued by the relevant Consenting Authority (including conditions stated in the permit), and requirements in the Regulations must be considered together. The more stringent requirement prevails.

##### **C1.4.1 Site Investigation**

Thorough site investigation is a critical factor for the successful installation of water measurement systems in open channels. Poor site investigation may lead to poor site selection and system design. Site investigation should consider factors including:

- Channel gradient and shape;
- The range of expected flow rates;
- The impact of backwater effects (other water bodies or structures affecting water level);
- Expected sediment/debris load (e.g. branches, silt, etc.);
- Expected weed and algal growth;
- Possibility of strong wind affecting measurements;
- Migratory fish passage requirements;
- Allowable head loss across the measurement system;
- Possible ice/snow;
- Ability of the upstream channel to contain increased water levels caused by the measurement system;
- Accessibility of the site; and
- Site constraints that would affect measurement system layout.

The selection of the measurement site, the design of the measurement system, and the long-term inspection and maintenance requirements of the system must all take into account the outcomes of the site investigation.

System and site selection require experience; therefore, it is recommended that professional expert advice is sought. The diversity of site and take characteristics mean that there is no one standard approach that can be adopted.

##### **C1.4.2 Considering Possibility of Conversion to Full Pipe Flow**

Measuring flows in open channels or partially full pipes is generally more complex and costly than flows in full pipe. Consideration should therefore be given to the possibility of converting any open channel or partially full take into full pipe flow. In some cases this might be easier and cheaper, particularly from a life-cycle cost model perspective because of the lower ongoing maintenance requirements of full pipe flow measurement systems. Conversion to full pipe flow is commonly achieved by incorporating an inverted siphon in a pipe – either as part of existing piped infrastructure or added to an open channel take. This would then allow the use of a meter suitable for full pipe flow. If such configurations are used, then the relevant guidelines are detailed in the *Section B: Guidance on Water Meters for Full Pipes*.

#### **C1.5 TRAINED INSTALLERS**

The permit holder should be aware that there are trained professional installers and suitably qualified hydrologists who have specialist experience in the design, installation and maintenance of measurement systems for open channels and partially filled pipes. Some Consenting Authorities may also require the use of selected approved installers only.

The Regulations, however, do not specify who are permitted to install measurement systems, and do not require the use of an approved installer.

#### **C1.6 LIFE-CYCLE COST MODEL**

When considering options, it is recommended that the permit holder takes into account the life-cycle costs of the measurement system, and not only the initial capital costs. The life-cycle cost refers to the total cost of ownership over the life of the water measurement system. This implies that cost optimisation should consider not only the initial capital cost, but also operational, inspection, maintenance/repair, re-calibration, and replacement/renewal costs.

For example, choosing a measurement system that has the lowest initial capital costs but does not suit site conditions might lead to greater overall costs in the long term. Similarly, if site conditions require the professional expertise but the permit holder chooses not to seek any help, overall costs might be higher if the measurement system fails verification and then requires modification or an entirely different system.

Permit holders should also be aware that the required frequency of inspection, maintenance and re-calibration depends on the type and robustness of the measurement system, and site conditions. More frequent requirements for



inspection, maintenance and servicing can add significantly to a system's total life-cycle cost.

Furthermore, different measurement system technologies have different typical useful service lifetimes. When considering these, the permit holder should consider the duration of the water permit, and the likelihood of the permit being renewed beyond the current permit term.

## C2 Water measurement system general considerations

This section outlines the minimum requirements and associated best practice recommendations for water measurement systems used for open channels and partially filled pipes.

All water measurement systems for open channels and partially full pipes, regardless of whether they are based on techniques suggested in this guideline document or not, must meet the requirements in this section.

### C2.1 ACCURACY

#### C2.1.1 Interpretation of Accuracy Requirement

For flows in open channels or partially full pipes, the Regulations state that the continuous water measurement records to be provided must be kept using a system that measures the volume of water to within  $\pm 10\%$  of the actual volume taken. This means that when the water measurement system is installed, the in-situ measurement of water volume has a maximum permissible uncertainty of  $\pm 10\%$  of reading over the entire range of expected flow rates under the specific site's operating conditions, to a confidence level of 95%. In other words, 95% of instantaneous volumetric flow rate measurements are within  $\pm 10\%$  of the true volumetric flow rate. Refer to Appendix C for more information on how accuracy compliance is determined.

Verification of this accuracy is covered in Section C3. The accuracy verification will be the primary means by which compliance or non-compliance with this requirement is established. However, the requirement for the water measurement system to continuously provide accurate data leads to other implied obligations.

#### C2.1.2 Suitable for Specific Site

The water measurement system must achieve the required measurement accuracy for the specific site conditions and the entire range of expected flow rates. The Regulations also state that the water measurement system must be suited to the qualities of the water it is measuring (including temperature, algae content, sediment, pH, conductivity and any other relevant water quality characteristics). No reasonably expected disturbances should cause the accuracy of the measurement system to deteriorate beyond the permitted limits.

Therefore, a thorough site investigation (described in Section C1.4.1) must precede the selection/design and installation of a water measurement system.

Furthermore, the water measurement system must meet the conditions of the water permit and the requirements by the relevant Consenting Authority.

#### C2.1.3 Flow Disturbances

To achieve the required accuracy, consideration should be given to eliminating flow disturbances (or if not practicable, then minimising their effect) when designing the water measurement system and selecting its location.

The water measurement system should be located such that anything that can cause flow disturbance is sufficiently far upstream or downstream of the water measurement system to minimise its effect. Note that flow disturbances can often have an effect well beyond the lengths used in the following standard good industry practices, but they would be minimised.

#### Open Channel Systems

In open channels, flow disturbances can occur anywhere there is a change in flow direction, channel width, or water depth. Good industry practice generally requires that the water measurement system has a minimum straight upstream channel length with no flow disturbances equivalent to 10 times the channel width. The appropriate management of flow disturbances immediately downstream depends on the specific type of water measurement system used.

#### Partially Full Pipe Systems

In partially full pipes, flow disturbances are generally caused by fittings such as valves, bends or junctions. Good industry practice for partially full pipe systems requires that the water measurement system has sufficient straight pipe lengths with no flow disturbances (what is a sufficient length will depend on the specific situation).

#### C2.1.4 In-situ Calibration

Calibration is the process of checking and adjusting the measurement system (including its measurement parameters and ratings) to achieve the required accuracy. Calibration is not to be confused with verification, which is a formal assessment of the water measurement system for compliance with the accuracy requirement of the Regulations (covered in Section C3). Calibration must be performed in-situ (without removing the system) to ensure that the accuracy takes installed (on-site) conditions into account.

In-situ calibration must be performed as soon as practicable after:

- installation,
- any maintenance/repair work that may affect the system's calibration parameters, and
- any significant flood event or channel disturbances.

In addition, periodic, planned calibration checks are required to ensure that the measurement system continues to achieve the required accuracy. The frequency of planned calibration checks should depend on the specific site conditions, and the type and robustness of the system. Permit holders are strongly recommended to seek professional advice to determine a suitable calibration frequency. Some Consenting Authorities may also require a range of flows or a minimum number of calibrations to be performed annually for open channel systems.

Permit holders must also keep calibration records which include the magnitude of rating changes (i.e. what changes had to be made), dates of the changes, and any reasons for the changes. These must be made available for inspection when requested by the relevant Consenting Authority.

Any suitable technique may be used to calibrate the water measurement system. Currently, calibration normally involves taking flow rate measurements using another device or system of known accuracy and using these measurements to calibrate the water measurement system. Measuring the flow rate can be done using a variety of methods, including bucket-and-stopwatch volumetric measurement (measuring time to fill a container of known volume) and the velocity-area method (using a current meter to measure velocity at several locations across the channel). Other techniques may be developed in the future.

In general, increasing the number of calibration points will increase the overall accuracy of the measurement system (e.g. more stage-discharge data points provide a more accurate stage-discharge rating). This accuracy is assessed during the formal verification processes, as well as the regulatory compliance inspections by the Consenting Authority. Therefore, it is important to use a sufficient number of data points, which depends on the measurement system and the expected range of flow rates.

### **C2.1.5 Inspection and Maintenance**

To continue to provide records which comply with the Regulations' accuracy requirement, the water measurement system must also be regularly inspected and maintained throughout its operational life. As with calibration, the frequency and thoroughness of the inspection and maintenance work must suit the specific site conditions and type of installed water measurement system, such that there is an acceptable level of confidence that the system continues to operate within its permissible in-situ measurement uncertainty of  $\pm 10\%$  of reading. This is important to ensure the integrity of the water take measurement data. Therefore:

- The installed configuration of the water measurement system must allow for its maintenance;
- The permit holder must ensure that a regular maintenance plan is developed (and submitted for approval if required by the relevant Consenting Authority); and

- The permit holder must ensure that all planned maintenance and necessary repairs are performed in a timely manner by appropriately qualified persons.

Permit holders must retain copies of maintenance records as evidence of the service record of the water measurement system. These must be made available for inspection when requested by the relevant Consenting Authority.

Servicing and maintenance of any proprietary components (e.g. sensors) must always be performed in accordance with the manufacturer's specifications, normally by a service provider approved by the component manufacturer or agent. Preventative maintenance generally includes an assessment of components for wear or damage, and replacement of components at the appropriate time.

For open channel water measurement systems, maintenance normally includes:

- Checks for water leakage/diversion that bypasses the control section (that would, therefore, not be measured) and associated repairs;
- Keeping the approach channel and control section free of debris, deposition of silt and bed material, twigs, algae, weeds/vegetation and ice;
- Checking the approach channel for erosion and subsidence; and
- Checking any water level measurements against a reference level such as a staff gauge and adjusting if necessary. The staff gauge should be periodically checked against survey benchmarks.

For partially filled closed conduits, preventative maintenance normally includes checking for structural integrity of pipe-work and fittings, and removing any debris and blockages.

### **C2.1.6 Evidence of Maintenance and Calibration**

Maintenance and calibration records (covered in Sections C2.1.4 and C2.1.5) provide evidence of efforts to ensure continued compliance with the accuracy requirement of the Regulations.

In the event that a measurement system is found to be non-compliant during verification or spot checks, the relevant Consenting Authority is likely to consider the suitability of the calibration and maintenance frequencies in deciding whether all practicable steps have been taken to ensure that the system continues to achieve the required accuracy. Furthermore, the frequency of spot checks by the Consenting Authority is likely to be influenced by the suitability of the maintenance and calibration frequencies.

As previously highlighted, the required maintenance and calibration frequencies depend highly on the type and robustness of the system, and site conditions.

## **C2.2 MEASURING RANGE CAPABILITY**

The Regulations state that the water measurement system must be able to provide records pertaining to the continuous measurement of the water taken under water permit, including water taken in excess of what the permit allows. Therefore, the water measurement system must be capable of accurately measuring the entire range of expected flow rates, i.e. not only up to the flow rate specified in the water permit, but what the conduit would be reasonably expected to convey (based on intake structure or system capacity).

## **C2.3 LOCATION**

The Regulations require that water measurement systems be installed at the location from which the water is taken under the permit, or if approved in writing by the relevant Consenting Authority, as near as practicable to that location. Therefore if, for example, a site investigation establishes that the actual measurement site needs to be somewhere other than the abstraction point specified in the water permit, the permit holder must apply to the relevant Consenting Authority for approval.

Because the intention is for all water taken under the water permit to be measured, there must be no off-take (except those for permitted water takes e.g. domestic, stock water and fire-fighting), diversion or branch between the location from which the water is taken and the water measurement system.

## **C2.4 RECORD KEEPING**

The Regulations state that the permit holder must keep records comprising measurements (in cubic metres) of the volume of water taken in each 15-minute period and electronically transferred to the Consenting Authority each day.

The responsibility of ensuring that records are kept and reported to the relevant Consenting Authority lies with the permit holder (but they can be done by a representative of the permit holder). The requirements relating to the form of records kept is outlined in the Guidance for water permit holders on Data Management in Section D.

### **C2.4.1 Electronic Data Logging Capability**

The Regulations require that the measuring system be able to provide 15-minute period data and that the data be transferred electronically to the Consenting Authority daily. This is a requirement to fit an electronic data logger and telemetry unit.

Where approval is given under Regulation 7A(5) and a data logger is used without a telemetry unit for the daily transfer of data. The permit holder is required to download and provide data at an interval specified by the Consenting Authority. Please see Section D1.5.1 for more information on applying for exemptions and download frequency.

It is recommended that data loggers, if installed, should have sufficient capacity to store no less than one year of flow data, with a logging interval of 15 minutes for all water take permits.

Always check the consent conditions to ensure the equipment being installed is capable of meeting compliance requirements.

The National Environmental Monitoring Standards (NEMS) is a suite of documents dealing with different aspects of environmental monitoring by Consenting Authorities. The NEMS documents relevant to open channel measurement indicate how Consenting Authorities would like data to be presented and how they will manage and use the data. The NEMS documents are available at: [www.nems.org.nz](http://www.nems.org.nz).

### **C2.4.2 Preventing Lost Data**

The permit holder must take all practicable steps to prevent lost data. Where the water measurement system relies in any way on an electrical power source, it must have a non-volatile memory. This is to ensure that recorded data is not lost, and remains accessible for a minimum of one year, in the event of a power or battery failure.

There should be reasonable backup battery power for all systems to ensure that water measurement and recording continues in the event that the primary power source fails.

To further prevent missing data records, the permit holder should ensure that the water measurement system is frequently checked to ensure that it is still recording data.

### **C2.4.3 Record Reporting**

The Regulations state that the permit holder must provide records that cover water take volumes (in cubic meters) in each 15-minute period and that this data is transferred daily. Should daily transfer not be possible and an exemption given under Regulation 7A(5) then the regulations require data is provided for each water year of the permit to the relevant Consenting Authority no later than one month after the end of the water year. Consenting Authorities can however set more frequent reporting intervals, please see Section D1.5.1.

The permit holder must be able to obtain measurement records from the water measurement system in a form suitable for reporting to the relevant Consenting Authority. The requirements relating to the form of records provided to the relevant Consenting Authority is outlined in Section D.

To check the reliability of the measurement records, the Regulations state that the relevant Consenting Authority may request evidence from the permit holder that the water measurement system that kept the records has been verified as accurate, i.e. a verification report as described in Section C3.11. The permit holder must provide the relevant Consenting Authority with the evidence as soon as practicable after receiving the request. Although not covered by the Regulations, some Consenting Authorities may also require more data (e.g. water level records) from the water measurement system to validate the accuracy of the flow measurement records.

## **C2.5 ALLOWING FOR VERIFICATION**

The Regulations require accuracy verification of water measurement systems. Therefore, the design and installation of the water measurement system must facilitate the in-situ verification process.

For open channels, the verification facilities required depends on the type of measurement system used. Due consideration must be given to ensure that the configuration of the system facilitates verification.

For partially filled closed conduits, possible configurations that may be installed to facilitate verification include:

- Flow diversion devices to allow volumetric measurement or to allow water to run through an independent measurement system; or
- A section of pipe with flanges to allow an independent measurement system to be inserted in-line (with sufficient pipe lengths on each side).

Unless there can be sufficient confidence that in-situ conditions can be replicated, verification should be performed in-situ instead of in a laboratory.

With further technological innovation and its availability, Consenting Authorities may also permit other verification-facilitating configurations.

## **C2.6 SECURITY**

The Regulations state the water measurement system must be sealed and be as tamper-proof as practicable. Tampering would affect the credibility and hence the usefulness of the data collected. Therefore, the design and installation of the water measurement system must take into account all practicable steps to protect the components of the water measurement system from intentional tampering. This includes protection devices/seals for individual components that prevent tampering and/or indicate when tampering has occurred.

Where it is impracticable to make the entire system tamper-proof because of the configuration of the system (this is likely for most open channel water measurement systems), the relevant Consenting Authority may perform more frequent random checks to discourage tampering. However, even when the entire system cannot be made tamper-proof, individual components that can be made tamper-proof must be made tamper-proof.

In addition, the design and installation of the water measurement system should consider the protection of operators, the public and the environment from harm from the system.

## **C2.7 OTHER CONSIDERATIONS**

There are other requirements that are not directly related to the Regulations, but are important for the long-term integrity of the water measurement system and the measurement records it provides. These are covered in Appendix B.

## **C2.8 COMMISSIONING**

Commissioning must be conducted at the end of installation to ensure that the water measurement system is ready for verification and subsequent use. The commissioning procedure will include the following checks:

- Check that all components of the water measurement system have been installed correctly;
- Check that the entire flow passes through the measuring point;
- Check that all required calibration has been completed;
- Check that the correct software has been installed and configured in the central processing unit; and
- Check that all components are sufficiently supported and protected from damage.

## **C2.9 SUBMISSION OF INSTALLATION INFORMATION**

Upon completion of the commissioning of the water measurement system, the installer (which may be the permit holder) must submit within one month the following installation information to the relevant Consenting Authority:

1. An installation commissioning report describing the water measurement system, signed by the installer; and
2. A photograph and a detailed as-built diagram of the installation configuration, including dimensions and verification facilities.

The installation commissioning report should contain at least the following information:

- Permit holder's name and water permit number;
- Commissioning completion date;
- Brief description of the type, dimensions and identification/serial number (if any) of the water measurement system;
- Location description and GPS coordinates of the water measurement system;
- The initial reading (m<sup>3</sup>) at the time of commissioning;
- Name and signature of the installer; and
- The installer organisation's name, address and contact phone numbers.

If any major repairs/reconfigurations that alter the system layout are subsequently performed, updated information must be submitted to the relevant Consenting Authority.



## C3 Verification

This section outlines the key features of the verification process which forms the primary means of quality assurance and the main process in assessing compliance with the accuracy requirement of the Regulations. It does not contain the full breadth of information required by verifiers for the wide range of different systems; this is better covered in detail in proper training courses. Instead, it lays down the basic features for the verification process to give sufficient confidence that verified water measurement systems provide accurate, quality water take data.

### C3.1 PURPOSE AND SCOPE OF VERIFICATION

Verification gives confidence that the water measurement system meets the accuracy standard required in the Regulations, i.e. the in-situ measurement of water volume has an uncertainty of no more than  $\pm 10\%$  of reading for the entire range of expected flow rates under the specific site's operating conditions, to a confidence level of 95%.

Although verification and calibration may involve similar techniques, they are two different processes. Calibration, which is covered in Section C2.1.4, involves periodic checking and adjusting of measurement parameters and ratings to enable accurate volumetric measurements by the water measurement system. Verification, which is covered in this section, involves formal assessment of the water measurement system for compliance with the accuracy requirement of the Regulations.

Verification also differs from regulatory compliance inspections. Verification involves the permit holder engaging a verifier approved by the relevant Consenting Authority. On the other hand, a regulatory compliance inspection typically involves a representative of the Consenting Authority contacting the permit holder for a visit at short notice to discourage intentional tampering, poor/infrequent maintenance, misreporting of data and non-compliance with the Regulations.

### C3.2 APPROVED VERIFIERS

Verification of the water measurement systems must be carried out by a person, who in the opinion of the relevant Consenting Authority that granted the water permit, is suitably qualified to verify the particular measurement system.

For open channel work, the definition of a suitably qualified hydrologist refers to a hydrologist with no less than 5 years of relevant practical experience and trained in the practical aspects of open channel flow measurement and/or holds a Diploma in field hydrology. The verifier can be part of the relevant Consenting Authority or an external organisation, provided that the criterion is met. Some Consenting Authorities may also require that the verifier was not involved in the installation nor provided any advice to the permit holder.

For Blue Tick Accreditation, the company holds the Accreditation, but the suitably qualified staff member is the one who must undertake the actual work.

### C3.3 REQUIRED VERIFICATION FREQUENCY

The installed water measurement system must be verified on site at the times stipulated in the Regulations, i.e.:

1. Initially, after commissioning but before end of the first water year,
2. Subsequently, at least every 5 years.

For example, if the first verification is performed on 1 March 2013, the second verification must be performed no later than 1 March 2018. The second verification may be performed earlier than 1 March 2018, e.g. on 1 March 2017; however, if this is done, then the third verification must be performed by 1 March 2022.

Although not required by the Regulations, some Consenting Authorities may require more frequent verifications for some open channel measurement systems.

### C3.4 REFERENCE MEASUREMENT EQUIPMENT

The key part of the verification process involves taking reference measurements with which the measurements from the water measurement system can be compared.

The equipment used to for reference measurement as part of the verification process must be suitable for verifying the accuracy of water measurement systems. The reference devices used for verification must be:

- Maintained and calibrated to within a known measurement uncertainty that is no more than  $\pm 2\%$  of reading at 95% level of confidence;
- If required, the equipment shall be tested and certified yearly by an ISO 17025 or 9001 accredited laboratory;
- Used within the normal purposes and range for which they were certified; and
- Operated by a trained and certified person.

Current meters should be calibrated in accordance with ISO 3455, and recalibrated whenever their performance is suspect.

### C3.5 TEST VOLUMES

The minimum reference measurement volume for each test depends on the resolution of the real-time flow data available (either through an installed on-site display or alternative means). The test volume must be sufficiently large to allow the flow rate to be measured with minimal error associated with reading the data.

### C3.6 TEST FLOW RATES

The verifier will decide the number of flow rates to be tested based on the measurement system type and site conditions.

The verifier will typically alter the flow rates, e.g. using a gate for open channels or using a valve for partially full pipes. The flow rates for each test will be set by the verifier, but should consider the full range of expected flow rates, for instance:

- A low flow rate – e.g. 1.2 x (the minimum expected flow rate to be measured);
- A high flow rate – e.g. 0.9 x (the maximum expected flow rate); and
- A medium flow rate – halfway between the low and high flow rates.

For more critical water takes with high flow rates, the verifier may choose to perform sufficient tests (normally no less than 5) to check that the rating is correct.

### C3.7 VERIFICATION METHODS FOR OPEN CHANNELS

#### C3.7.1 Bucket-and-Stopwatch Volumetric Measurement

Bucket-and-stopwatch volumetric measurements have the highest potential for accuracy. Where there is sufficient fall and a suitable structure, the bucket-and-stopwatch volumetric method may be suited. However, there are many situations where this is not applicable.

This method involves direct measurement of the time taken to fill a container. There are practical limitations with respect to manageable container size and sufficient filling time to provide accuracy. Therefore, this method is often not suitable for flows greater than 10L/s.

There are two general procedures that can be used:

- Position a calibrated container to collect flow discharging from the weir/flume, and simultaneously starting a stopwatch. Stop the stopwatch when the water volume reaches the calibration volume mark. Divide the calibration volume by the filling time to determine the flow rate.
- Position an uncalibrated container to collect flow discharging from the weir/flume, and simultaneously starting a stopwatch. Stop the stopwatch when the container is nearly full. Transfer the collected water into a calibrated container and measure the collected water volume. Divide the collected water volume by the filling time to determine the flow rate.

The container used for collecting water should be sufficiently large such that the filling time is at least 10 seconds (for more accurate filling time measurement). The calibrated container should be of a suitable shape to allow for accurate reading.

Where practicable, for each flow rate test, the verifier should repeat the measurement for a sufficient number of times (at least 10) to calculate the mean and standard deviation of the measured flow rate.

The measured flow rate is then used as a reference flow rate against which the flow rate measured by the water measurement system can be checked.

#### C3.7.2 Velocity-Area Method

The velocity-area method can be used to verify the flow rate, especially where bucket-and-stopwatch volumetric measurement method is not practical and/or not sufficiently accurate. This method generally involves:

- Using a current meter to measure the velocity at locations or 'verticals' spaced across the channel width;
- Measuring the water depth at each vertical, at the same time as measuring velocity; and
- Calculating the flow rate from the velocities and water depths.

The use of a current meter will require the expertise of a suitably trained person. The flow measurement should be undertaken in accordance with ISO 748.

#### C3.7.3 Alternative Reference Measurement Method

Alternative reference measurement methods are acceptable provided that they are approved by the relevant Consenting Authority.

### C3.8 VERIFICATION METHODS FOR PARTIALLY FULL PIPES

Based on the in-situ verification facilities outlined in Section C2.5, verification would involve:

- Volumetric measurement of water taken via a flow diversion device (similar procedure to Section C3.7.1), or
- Using an independent measurement system, measuring water taken via a flow diversion device or inserted in-line.

The verification procedure for partially full pipes would depend on the specific verification method used, which in turn depends on the in-situ verification facilities provided.

### C3.9 DETERMINATION OF MEASUREMENT ACCURACY COMPLIANCE

Central to the verification process is the interpretation of the measurement system's accuracy from the results of the verification tests. The results of the tests should not be generalised because the measurement system's measurement accuracy would be affected differently at varying flow rates.

The verifier will need to identify and combine all sources of uncertainty in the reference measurement. While the reference/verification equipment used should have a certified uncertainty of no more than  $\pm 2\%$  of reading at 95% level of confidence, the combined uncertainty at 95% level of confidence may be no more than  $\pm 5\%$  of reading.

The accuracy compliance of the installed water measurement system should be interpreted in consideration of the combined uncertainty of the reference measurement. Uncertainty of the reference measurement system must be

taken into consideration when determining non-compliance because the Regulations state that the measurement by the water measurement system must be within  $\pm 10\%$  of the actual volume taken (which is unknown), not of the reference measurement.

Refer to Appendix C for a more information on how measurement accuracy compliance is determined.

### **C3.10 SITE VERIFICATION**

Reference measurements allow a 'snapshot' verification of the accuracy of the water measurement system. Inspection of the water measurement system during the verification process will not guarantee that the water measurement system will continue to provide accurate measurements between verifications, but it will help promote that outcome and highlight to the permit holder any problems that need to be addressed.

Therefore, for all water measurement systems, verification should include the following inspection steps to evaluate the integrity of the water measurement system:

- Check that the water measurement system is used in an appropriate manner
- Check the overall condition of the water measurement system;
- Check that the submitted installation information is correct and still up to date;
- Check the water measurement system against the installed benchmarks (e.g. level measurement checked against the staff gauge reading)
- Check preventative maintenance plans and maintenance records;
- Check the channel for scour/fill and weed/algae growth;
- Check the system for damage;
- Check for evidence of interruption of signal transfer between the sensor(s) and central processing unit;
- Check that power supply is reliable (e.g. if the water measurement system uses batteries, then the expected replacement date are marked and not yet due);
- Check that the system has been made as tamper-proof as practicable, and where installed, that tamper-proof seals are in place and unbroken;
- Check that there are no leaks that bypass the measuring point;
- Check for scaling or build-up of calcium, iron oxide or iron bacteria;
- Check that filters/strainers/screens (where applicable) are clean; and
- Check that protection from weather and other damage are still adequate.

### **C3.11 VERIFICATION REPORT**

The Regulations state that the relevant Consenting Authority may request evidence from the permit holder that the water measurement system that kept the submitted records has been verified as accurate. Therefore, after verification of a water measurement system, a verification report must be issued by the approved verifier to the permit holder as evidence of verification. When requested by the relevant Consenting Authority, the report must be provided as soon as practicable after receiving the request.

The verification report must have as a minimum:

- Permit holder's name and water permit number;
- Verification date;
- Brief description of the water measurement system (open channel/partially filled pipe, sensor type(s), control section type, data logging/telemetry, other notable features, etc);
- Conduit dimensions (e.g. width, depth, etc. depending on shape);
- Capability of being fitted with an electronic data logger;
- Location description and GPS coordinates of the water measurement system;
- Water measurement system reading (m) immediately before and after verification tests;
- Brief description of the verification method used;
- Verification equipment description and serial number;
- Confirmation that the verification equipment used (e.g. calibrated containers, reference measurement system, etc.) are currently certified and are available on request;
- Verification results, including individual accuracy requirement compliance/non-compliance for each flow rate tested;
- Decision on compliance/non-compliance;
- General inspection notes;
- Name and signature of the verifier; and
- The verifier organisation's name, address and contact phone numbers.

### **C3.12 NON-COMPLIANCE**

If the verifier determines that the water measurement system does not comply with the accuracy requirement of the Regulations, the permit holder is responsible for ensuring that all practicable remedy steps are taken as soon as possible to achieve compliance. Within a period determined by the relevant Consenting Authority to allow for these remedy steps, the permit holder must arrange for verification of the water measurement system to be performed again.

If the verifier determines that the water measurement system complies with the accuracy requirement, but highlights other issues arising from the general inspection,

the Consenting Authority may require that the permit holder to fix the issues within a specified timeframe. This does not constitute non-compliance with the accuracy requirement of the Regulations, and therefore, there is no requirement for re-verification (but relevant Consenting Authority retains discretion to require this).

## C4 Open channel water measurement technique

This section outlines the current best practice used for measuring open channel flow. Regardless of the technique used, all installed water measurement systems must be verified as accurate, as described in Section C3.

### C4.1 MEASUREMENT TECHNIQUES

There are many techniques that could theoretically be used to measure flow in open channels. However, the main technique currently used is the stage-discharge method.

Other techniques include the velocity-area method, volumetric method, slope-hydraulic-radius (Manning) method and dilution method. However, these are generally impractical for continuous, long-term in-situ measurement of water flow, which is required in the Regulations.

This guidance document acknowledges that future technological advances are likely to create innovative techniques or improve currently inappropriate techniques.

It is important to note that a water measurement system based on any technique would be suitable provided that it meets the requirements outlined in Section C2, and is verified as accurate as described in Section C3.

There are some devices such as the Rubicon flume meter which uses ultrasonic flow measurement and water level measurements to  $\pm 2.5\%$ . This technique for open channel measurement is highly accurate and any such method currently available to verify open channel systems will be far less accurate than the device itself. In instances such as this, any verification would only be useful for identifying gross inaccuracies. Servicing and on site built in diagnostics would be more useful in identifying any issues with the meter than verifying with a less accurate method.

### C4.2 STAGE-DISCHARGE METHOD

The stage-discharge method is used widely to continuously measure flow in open channels. In an open channel, the water level (stage) is related to the flow rate (discharge). This technique involves the measurement of water level, and conversion of the water level into a flow rate based on a pre-determined stage-discharge rating curve.

The stage-discharge rating curve is the relationship between water level and flow rate established specifically for the site. The stage-discharge method relies on developing an accurate stage-discharge rating for the open channel. For the stage-discharge rating to be determined, the flow in the channel must be measured by another method, such as volumetric, velocity-area or dilution methods.

The likelihood of the specific site retaining the stability of this relationship over time is crucial for this method to continuously provide accurate water measurements in the long term.

#### C4.2.1 Control Section

The stage-discharge technique normally requires a control section, such as a weir or flume. The control section causes a change in upstream flow depth that can be measured by the water level sensing device. (In certain circumstances, a suitably qualified hydrologist might consider that a particular channel cannot have a control section, and will therefore, have to configure the system appropriately.)

A weir is a calibrated dam structure constructed across a channel to control the upstream water level, so that there is free-fall critical flow across the weir. A flume is an artificial channel with a symmetrical constriction in the sides or bottom, which for a particular flow range, can cause critical flow and hence a standing wave to occur.

There are a wide range of weirs and flumes of various shapes and angles, which have different strengths and weaknesses, including different accuracy capabilities. There are thin-plate weirs and broad-crested/long-base weirs, with various cross-sections (including V-shaped, rectangular, and trapezoidal). Flume types include H-type, Parshall, Palmer-Bowls, and trapezoidal flumes. The control section choice must take into account the specific site characteristics and the requirement to achieve the  $\pm 10\%$  measurement uncertainty for the expected flow rate range to be measured.

There is a predetermined, theoretical stage-discharge rating for the particular weir or flume used based on its design. However, this rating must be confirmed on site after installation. Usually, the rating will need to be corrected on site because of discrepancies in design/installation or non-ideal site characteristics. This rating must also be periodically checked and corrected over the lifetime of the water measurement system.

The control section increases the upstream water level, therefore the upstream channel banks must be sufficiently high and structurally strong to handle water flowing at the maximum expected flow rate.



#### C4.2.2 Level Measurement

The stage-discharge technique requires a water level measurement device (level sensor). Level sensors available currently include:

- Float and counterweight encoder: Consists of a pulley rotated by a float/counter-weight system. Each increment of rotation is converted to a signal. Signals are converted to water level.
- Submersible pressure transducer: The difference between the atmospheric pressure and water pressure acting on the sensing component is converted into a signal that varies with pressure. Water pressure increases linearly with water depth, therefore the latter can be calculated.
- Ultrasonic sensors: Can be upward-looking or downward-looking. For downward-looking sensors, sound waves are transmitted through the air and reflect off the water surface and are received by the sensor. The time interval between the transmitted and received signal is measured to calculate water level. Some ultrasonic sensors can also measure velocity.
- Bubbler sensors: The pressure of an air-filled tube/chamber with an open, submerged bottom end is measured. Water level is proportional to the difference between hydrostatic pressure in the tube and atmospheric pressure, therefore it can be calculated.

Advantages and disadvantages vary widely between level sensor sub-types (even those using the same technology) and manufacturers, and these are likely to change over time with innovation. Therefore, no comparison has been included in this guidance document. The permit holder is encouraged to seek current advice to choose a suitable level sensor.

#### C4.2.3 Other Basic Components

To allow flow rate and cumulative flow volume to be measured, the level sensor outputs data to a central processing unit. The central processing unit records the measured flow depth, converts the flow depth to flow rate based on the stage-discharge rating, and totalises the flow rate over time to give the cumulative flow volume.

A staff gauge should be installed securely upstream of and close to the measuring point. A staff gauge is a graduated linear scale that acts as a secondary level measure. The water level can be read directly on the scale. This allows manual performance checking and calibration of the level sensor. Where a stilling well is used, having an external staff gauge in the channel and another internal staff gauge in the stilling well allows checks to ensure that the intake pipe is not blocked.

A stilling well is required:

- always for the use of certain types of level sensors (float and counterweight encoders, etc.;;) and
- sometimes for all level sensor types, if the velocity and flow disturbances in the approach channel are not negligible.

The purpose of a stilling well is to provide a stable water level in the open channel, while dampening water level fluctuations (such as waves and ripples), and/or protecting the sensors. The stilling well is connected to the open channel via an intake pipe that allows sufficient water entry. This ensures that there is no significant lag in the well water level to follow changes in the channel water level.

#### C4.2.4 The 'Ideal' Open Channel Site

The 'ideal' site for open channel water measurement would have the following characteristics:

- Channel has a straight, uniform section of length at least 10 times the channel width.
- Long-term stability of the channel cross-section, i.e. channel is not prone to scour or fill/sedimentation.
- Channel is not prone to aquatic growth (e.g. weeds), or it can be managed within limits.
- Low debris/sediment load.
- Measurement site shielded from the effects of strong wind.
- No migratory fish passage requirements.

Most deviations from ideal site conditions can be overcome in the design, and subsequent inspection and maintenance of the water measurement system. Examples are:

- Constructing a concrete channel will minimise channel scour and weed growth.
- Installing a screen and/or lid can prevent debris from damaging/blocking the system.
- Regular inspection and maintenance can prevent sediment, algae and ice build-up.

Some sites are simple and straightforward sites with minimal deviations from ideal site conditions.

#### C4.2.5 Complex Open Channel Sites

The following factors will create a complex environment for the measurement of open channel flow:

- High sediment/debris load;
- Man-made (e.g. concrete) approach channel cannot be constructed immediately upstream of measuring point;
- No straight section of sufficient length is available;
- Very steep channel slope;
- Migratory fish passage required;
- Regular maintenance is not practicable;
- Head loss across measurement system may affect downstream systems; and
- Effect of strong wind cannot be mitigated.

It is strongly recommended that the expertise of a suitably qualified hydrologist be used to define appropriate site-specific solutions if the site has any of these characteristics.

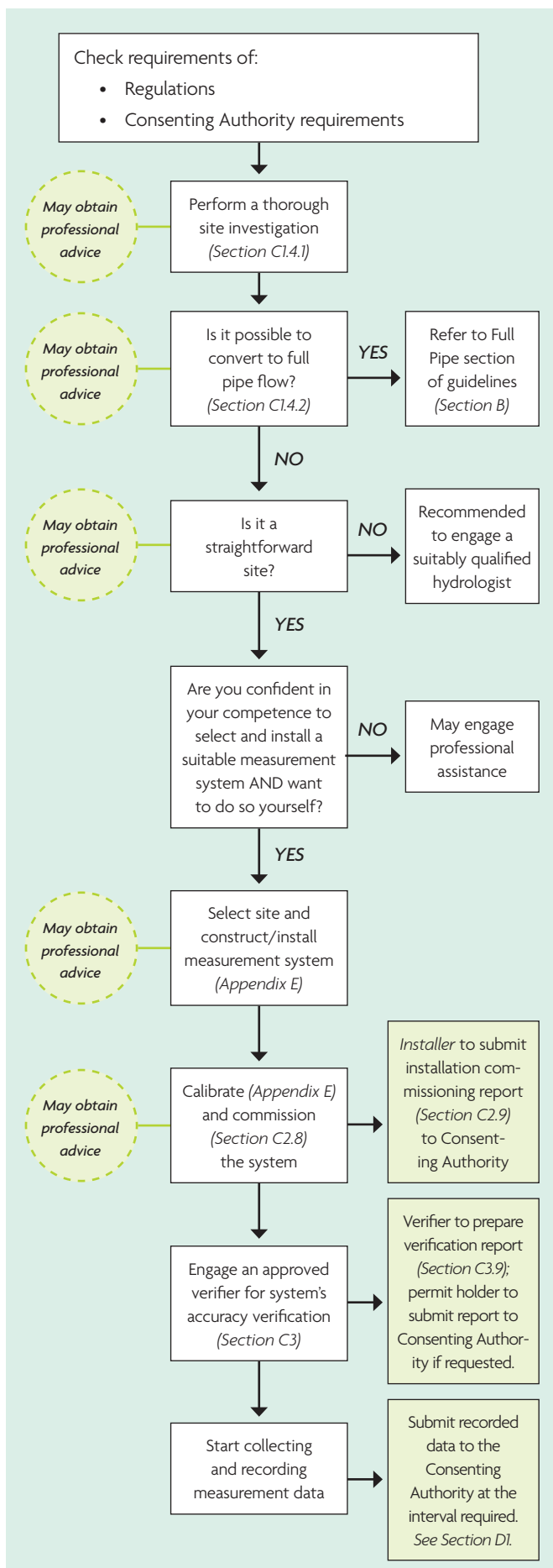


Figure 2. Recommended decision process for permit holders with open channel sites

### C4.3 RECOMMENDED DECISION PROCESS

Figure 2 presents a recommended decision process for permit holders with open channel flow measurement sites.

### C4.4 RECOMMENDED SERVICE INTERVAL FOR OPEN CHANNEL SYSTEMS

This section provides recommended service intervals for different commonly used open channel measurement systems. There are two types of inspection required periodically for open channel systems:

- A maintenance inspection is a visual check to identify if any maintenance on the measuring system is required, for example, checking for accumulated sediment/debris behind a weir.
- A calibration check is to determine if re-calibration of the system is required.

A maintenance inspection and a calibration check may be carried out simultaneously on the same visit.

The recommended time intervals below have been established for typical sites as described based on experience within the Canterbury region. However, measurement systems in other regions may require less or more frequent intervals depending on the local conditions in the region. Furthermore, the specific site conditions and the characteristics of the measurement system will determine the frequency required. For example, if weed growth is present, more frequent servicing may be necessary.

Table 4

Flow Measurement System	Frequency of Calibration Checks	Frequency of Maintenance Inspections
Automated Controlled Flume (pre-calibrated)	1–2 checks per season	1–2 inspections per season
Float and counterweight, stilling well and weir	Every 8 weeks	Every 8 weeks
Pressure transducer/bubbler/ultrasonic sensor and weir	Every 8 weeks	Every 4–6 weeks
Any system with a level sensor but without a control section (e.g. weir/flume)	Every 4 weeks	Every 4–6 weeks

## C5 Partially full pipe flow

In hydraulic terms, the flow in a partially full pipe is a special case of open channel flow. The obvious difference is that the conduit is completely enclosed.

The stage-discharge method commonly used for open channel flow can be used for partially full pipes providing there is sufficient access to allow flow measurement and calibration. While the use of a pipe provides a stable bed compared to a natural channel, there is still the same potential for complex flow conditions to develop, thus it is recommended that professional advice is sought for the specific site.

Measurement systems specifically for partially full pipes are currently available, but are not widely used for flow measurement of water takes in New Zealand. Therefore, the local experience history of these systems is insufficient to give confidence surrounding the reliable performance of these systems. Therefore, it is recommended that expert professional advice is sought before any of those systems are installed.

# Section D: Data management

---

## D1 Requirements of the regulations for data management

### D1.2 REGULATORY REQUIREMENTS

The Regulations require that 15-minute interval data, on the volume of water being taken, is recorded and transferred to the Consenting Authority on a daily basis. The Regulations do not prescribe the manner with which the water take data is to be transferred to a particular Consenting Authority, however for most people this means they will need to install telemetry equipment.

#### Water Take Data Required

The volume of water being taken under a water permit for 5 litres/second and greater must be measured, and these measurements must be continuously recorded and monitored. The specific details required include:

- 15-minute period volumes (in cubic metres), time stamped with a date and time;
- Data is transferred to the Consenting Authority daily; and
- Data that is based on measurements taken at the point where the water is first abstracted from the water body – that is, data on actual water taken.

While the regulations require records to be submitted daily, under Regulation 7A(5), Consenting Authorities may allow water permit holders to provide records at a later deadline. It is also only to be used when Consenting Authorities are satisfied that it is “impracticable” for the permit holder to comply with daily reporting. This is defined as “limitations in telecommunications where the recorded measurements are made”.

Records must still comprise of measurements taken in each 15-minute period and approval must be given in writing.

Further detail is provided in *D1.5.1 Exemption to Report 15-Minute Period Data Not Daily*.

### D1.3 METHOD OF DATA COLLECTION

A measuring system or device appropriate for the specific water take, situation and permit conditions should be used. Consideration should also be given to the requirements for the storage, transfer, and subsequent use of the data once it has been collected.

To achieve consistency and uniformity, water take records must be generated by a device or system that meets the following minimum requirements:

- Have the ability to continuously measure the amount of water being taken;
- Have the capacity to record at minimum 15-minute volumes in cubic metres to an accuracy standard of  $\pm 5$  percent for full pipes, and  $\pm 10$  percent for water taken by another method;
- Be capable of providing data electronically on a daily basis;
- Be capable of appropriately reporting information to meet the permit conditions imposed by the consenting authority;
- Be appropriate to the qualities of the water being measured (including temperature, algae content and sediment content); and
- Be sealable and as tamper-proof as practicable.

When taking manual readings from a water measuring system it is important that the reading is interpreted correctly. It is necessary to take a picture of the meter for reference. Two common sources of error in taking manual readings is misinterpretation of the decimal place (often denoted by differently coloured numbers rather than a decimal symbol) and failure to include the exponential component of a reading given in scientific notation (for example reading  $12\text{m}^3$  instead of  $12 \times 103\text{m}^3$  or  $12,000\text{m}^3$ ).

### D1.3.1 Electronic Interference

Water meter users should be aware of electrical equipment which could interfere with the collection of water take data. “Electronic noise” emanates from electrical equipment such as variable speed pump motors and electric fences. Measures may need to be taken to isolate the installed meter from electronic interference.

### D1.4 METHODS OF RECORDING

All possible steps should be taken to reduce corruption of data. Consideration should be given to:

- Reducing the number of steps involved whereby water take is measured and recorded; and
- Reduce the number of people involved in the ‘data train’.

Systems which involve the direct recording of data and transfer via telemetry are expected to produce the highest quality and most reliable data. In situations where such systems are not feasible, efforts must be made to make the



system as efficient as possible. Approval under Regulation 7(A)5 must be sought if data cannot be transferred daily – see Section D1.5.1

The quality assurance of water take data can be improved by following a few guidelines that are consistent across all data monitoring issues. These include:

- Annual device or system checks and site inspections;
- Regular check readings;
- Unambiguous raw data;
- Multiple readings (or instruments) to corroborate data quality and accuracy;
- Processes to detect transcription errors, instrument malfunction, or anomalous readings;
- Data screening for obvious errors and stored in both raw and corrected/calibrated files;
- Secure data storage and backup of data; and
- Systems for auditing data quality and completeness.

## **D1.5 REPORTING REQUIREMENTS**

To achieve consistency, reporting requirements need to conform to a minimum standard. Specific reporting requirements imposed by a Consenting Authority may exceed the minimum requirements of the Regulations but will not be less than the minimum standard.

The key requirements for reporting data and data transfer are that:

- The accountability for recording and transferring the data to the Regulatory Authority rests with the permit holder;
- 15-minute period volumes (or weekly volumes for some takes if approval is given under Regulation 9 of the Regulations) in cubic metres are reported in an auditable manner;
- A permit holder must keep records that provide a continuous measurement of the water taken under a water permit, including water taken in excess of what the permit allows;
- Data is transferred to the Consenting Authority on a daily basis unless approval for an exemption is given under Regulation 7(A)5;
- A permit holder must provide records that cover each water year of the permit to the Consenting Authority that granted the permit, data is to include zero readings; and
- The complete record for a water year must be provided no later than one month after the end of the water year.

After Data “post processing” of the data the third party provider will provide a comments file on any observations, faults and periods of missing record to the relevant consenting authority.

### **D1.5.1 Exemption to Report 15-Minute Period Data Not Daily**

The default expectation of water take consents that either fall under the Metering Regulations (RMA 2020), or are required to submit water take data via telemetry in consent conditions, is that data will be recorded every 15 minutes and submitted daily. Where the daily transfer of data is difficult an exemption can be applied for under Regulation 7(A)5 of the regulations if there are limitations in telecommunications where the recorded measurements are made.

Prior to applying water permit holders must demonstrate to the Consenting Authority that they have sought solutions to problems with telecommunications and provide evidence in the form of written documents outlining site challenges and expected costs from data management providers.

There are alternatives to sim card based telemetry options. Some examples are listed below and the application should clearly outline that they have been considered, why they will not work or show that the costs are onerous.

The following options shall be considered and discussed in the application:

1. Radio networks using repeaters/extenders, Internet connection, IoT, Satellite technologies
2. Contact alternative service providers – they may have different products and solutions
3. Move the measurement site – moving a water meter and/or telemetry unit to an area of adequate signal strength. This would require written approval from the Consenting Authority under Regulation 10.

### **D1.5.2 Data Logger Download Frequency**

Data logger download frequency affects the timeliness of both compliance response and the management of the resource, and also puts data quality at risk. If an exemption to use a data logger is approved, the download frequency will be determined by considering factors such as the potential environmental effects of a volume or rate non-compliance on the water body, the compliance history of the consent holder, and the management requirements of the water body.

It is expected that the data logger will be downloaded at least twice annually to mitigate the risk of loss of an entire water years data.

- The first download is expected to occur no more than 1 month either side of 31 December being the half-way point through a water year.
- The second download will occur within one month of the water year ending (during the month of July).
- Or; at any other time period specified by the Consenting Authority.

When downloading data from the logger, the person undertaking the download must take a photograph of the water meter and provide this to the Consenting Authority along with the data file. This has two purposes:

- The photograph works as a “check reading” which allows Consenting Authorities to compare the meter reading at each download with the data to assess data quality (missing records or incorrect multipliers)
- To mitigate the risk of data loss if the file is corrupted as it is downloaded. Using the meter reading Consenting Authorities are able to record the total volume used across the time period between the last successful download and the current reading.

#### **D1.5.3 Approval to Measure Water Takes on a Weekly Basis**

The Consenting Authority that granted a water permit may, at its discretion, grant approval to the permit holder to keep records of measurements of the volume of water taken under the permit each week (instead of each 15-minute period). This is expected to be used in rare exceptions with the updates to the Regulations in 2020 moving from daily volumes reported annually to 15-minute volumes reported daily. The Consenting Authority must grant approval by providing a written notice to the permit holder that specifies the period of approval.

#### **D1.5.4 Methods of Delivery to the Consenting Authority**

There are no methods for the delivery of the water take data to the Consenting Authority specified in the Regulations, although it is expected that users will change to automated telemetry systems.

Telemetry or electronic data loggers do have an up-front cost to cover the purchase of equipment and installation but thereafter the system is largely automatic with intervention only being required for maintenance and problem solving. The use of telemetry or electronic data loggers does involve an ongoing cost due to the subscriptions for the ongoing data transfer and management. It is important for both the Consenting Authority and the permit holder to consider both immediate and ongoing costs when assessing options for the delivery of water take data. It is likely that under the Regulations the key criterion with regard to data delivery will continue to be data delivery rather than the precise mechanism of transfer.

Whatever method is adopted it is useful if the data is in a format that allows quick and efficient integration with the hydrometric database maintained by the consenting authority.

### **D1.6 WHY IS YOUR DATA IMPORTANT?**

Data collected under the Regulations will be able to be used at a number of levels of reporting. For example, the data could be used to report against:

- Water resource allocation;
- Effectiveness of water resource management;
- National water use;
- Consent compliance;
- Consent allocation and
- Areas of potential water stress.

While the majority of reporting is likely to be undertaken within the specific Consenting Authority, the data is also required for reporting at the national level. Therefore, consideration must be given to ensure that all data is able to be aggregated to different levels. For this to be practical there must be consistency of categorisation across the country, at least to the level of national reporting.

#### **D1.6.1 Verification and Accuracy**

The benefits and value of the Regulations will only be obtained if the water take data is accurate and appropriate. It is therefore essential that systems are developed that verify the accuracy of the data supplied to the Consenting Authority.

Such a system must involve random checks on the device or system confirming that the reading is consistent with the data that has been supplied to the Consenting Authority.

Where the device or system readings and supplied data differ by more than an acceptable amount a mechanism must be in place to reconcile any difference.

Verification and accuracy procedures should also involve confirmation that, back-up copies of all the data are held by the permit holder or their agent indefinitely. Unless, the Consenting Authority has confirmed the data has been audited and archived by the Consenting Authority.

#### **D1.6.2 Data Auditing and Archiving**

The majority of the hydrometric database tools currently used by Consenting Authorities allow the seamless integration of water usage data. Such systems also allow the integration of this data with various consent conditions and reporting mechanisms. This approach, therefore, provides significant economies of scale and water management benefits. The use of sophisticated monitoring and modelling may not be necessary, or wanted, at this stage. However, the integration of water usage data allows the versatility of the hydrometric analysis system to be applied at any stage in the future.

The integration of the water measurement data with existing hydrometric systems therefore allows:

- Rapid transfer of the data to the Consenting Authority information system;
- Consistent handling of all data;
- Often, and preferable, ISO certified data quality control;
- Seamless merging of water take data with other hydrometric data;
- Integration of water take data with consent conditions;
- Straightforward compliance monitoring;
- Standardised data quality control;
- Standardised data retrieval;
- Standardised file management and archiving; and
- Standardised range of data analysis tools and reporting options.

### **D1.6.3 Quality Assurance System**

The Regulations only discuss data quality with respect to the actual measurement of the water take. There appears to be an inherent assumption that the quality of the device or system will carry through to the quality of the data held by Consenting Authorities. It is therefore essential that Consenting Authorities develop systems whereby the quality of the data held in their archive is both quantified and documented.

Issues of quality do not solely relate to the accuracy of the device or system recording the individual water take. For example, missing data and mistakes when taking manual readings also affect the overall quality of the data record.

All the commonly used hydrometric software tools used currently by Consenting Authorities have the facility to tag the water usage data with quality codes. Codes are used to reflect:

- Whether the data is from surface water or groundwater takes;
- Device or system accuracy;
- Differences between measurement device/system readings and manual readings;
- Missing data;
- Frequency of reading; and
- Time since last calibration.

The use of data quality codes ensures that during subsequent analysis, whether for reporting or for compliance monitoring, the quality of the input data is reviewed. This quality must be considered along with the results and any conclusions that may be drawn.

It is therefore essential that all water usage data is incorporated into the hydrometric system used by the Consenting Authority whenever possible. This ensures that all the data is quickly and efficiently incorporated into the existing quality control system. Considerable confidence can then be placed in the management of the data, and any results and conclusions derived from subsequent analysis.

## **D2 Good management practice – data management**

### **D2.1 DATA COLLECTION AND RECORDING**

The NEMS document stipulates that all water measurement data shall be quality coded in accordance with the National Quality Coding Schema, as this allows for valid comparisons across multiple data series.

To ensure consistency, across regions and for national reporting, a data format standard has been developed. In order to ensure the auditability of the data being collected, all raw data files should be kept indefinitely for future reference and not deleted.

### **D2.2 DATA REPORTING**

Water take data should be transferred to the Consenting Authority using the agreed format with that Consenting Authority.

#### **Provision of Data**

The levels of service around how data is sent from the service provider to Consenting Authority needs to be:

- i. Raw data is provided – there is no need for the host to quality code 200 as this expected and known
- ii. No “post processing” is to occur without prior permission from the Consenting Authority
- iii. After any “post processing” of the data, the associated Comments file or email confirmation outlining any issues/actions that could affect the data will be provided
- iv. The data host must always be able to retrieve the raw files if required to ensure the permit holder can comply with the requirement to provide auditable data as per D1.5.

The provision of raw data is the expectation, however, if the service provider cleanses data and the relevant consenting authority accepts the provision of cleansed data with comments then it recommended that an agreement be put in place between both parties. Service providers must contact the Consenting Authority to determine how data should be provided.

### **D2.3 TECHNICAL FAULTS**

Once a fault has been identified the other parties (parties includes installers, hosts, and the Consenting Authorities) will be notified within 2 working days. The timeframe for correcting the problem will be as soon as practicable. In the case where a third party service provider has been engaged, if the Consenting Authority does not receive a response from a third party provider within 5 working days the consent holder will be notified.

A check for faults should be conducted on a weekly basis to ensure faults are identified and rectified as soon as possible to avoid gaps in the data.

#### **D2.4 THIRD PARTY DATA SERVICE PROVIDERS**

The accountability for recording and transferring the data to the Consenting Authority rests with the permit holder. When engaging a third party service provider a terms of service agreement must be provided to ensure clarity around the responsibilities of all parties involved.

A Terms of Service agreement should include but is not limited to:

- i. Provision of consenting alerts
- ii. Faults finding and repair
- iii. Point of first contact
- iv. Data ownership
- v. Cost
- vi. Indemnity



# Section E: Requirements for portable pumps

---

## E1 Portable pumps

### E1.1 PORTABLE PUMPS

The Regulations require water meters to be installed at the point of take – well site or surface extraction point. However, in some situations there is no permanent pumping infrastructure at these locations. For these points of take, it may be permissible to mount the meter on the portable infrastructure, namely the pump.

### E1.2 SITUATIONS REQUIRING PORTABLE INFRASTRUCTURE

For surface water users, the lack of permanent pumping equipment is often because of the risk of flooding. Whether on the flood plain or a low terrace, being able to remove pumping equipment during high rain fall events or winter is often a must for preserving the equipment.

For other surface water users, they may have multiple sites that they take from along a stream or river and being able to move the pumping equipment from location to location is the most cost effective system.

For groundwater users, the use of portable pumps is often seen in areas where portable irrigation equipment is brought on-site. For example, travelling booms, guns or hand shift pipes are used by horticultural growers who move the equipment from site to site.

This lack of permanent infrastructure is often found on leased land with short term agreements. Therefore, the lease holder may not wish to make the investment into permanent systems including pumping and metering infrastructure.

### E1.3 CHALLENGES OF METERING PRIOR TO PUMPS

Most water meters are not designed to be installed on the suction side of pumps. If inappropriately installed on the suction side they may not be able to provide accurate water take records and they can have a shortened life expectancy.

While some meters may be able to be installed on the suction side, this has been considered by many Consenting Authorities as an unnecessary expense when no water can be drawn from the point of take without pumping infrastructure.

## E2 Portable pump design and commissioning

### E2.1 METER INSTALLATION

In addition to meeting the requirements of Section B, the meter must be selected and installed to ensure the vibration from the pump, its movement from site to site and the variations in water quality encountered does not adversely affect the performance and life expectancy of the flow meter.

The meter must be installed in fixed pipe work so it cannot easily be removed from the portable pump and should be as tamper proof as practicable.

Best Practice is to give portable pumps unique identifiers if the owner has more than one in their fleet of mobile pumps. The pump should have its unique identifier clearly labelled on the portable pump.

### E2.2 WATER METER DISPLAY

The purpose of an on-site display is to provide a reliable and unambiguous visual indication of the real-time measurement data. Therefore, it is crucial the meter display is not compromised and must have the following characteristics:

- Displays the cumulative volume expressed in cubic metres (m<sup>3</sup>)
- Large enough registering range to record one year's total volume without passing through zero
- Capable of continuous measurement and totalising
- Resistant to corrosion and fogging
- Ability to log into the meter to download data when the display is damaged prior to its repair.

### E2.3 WATER TAKE REPORTING

As per the Regulations, portable pump infrastructure is required at minimum to report 15-minute period water take records (in cubic meters) daily to the Consenting Authority. This requires the use of a telemetry system to ensure the data is automatically transferred to the Consenting Authority.

If the portable pump is used on two or more sites of take then a telemetry device with a GPS unit must be connected, to report the pumps location when pumping occurs. This shall be recorded at the same interval as the water take data (15 minutes) and date and time stamped correspondingly.

The telemetry equipment shall be installed in accordance with Sections B and D and in such a way that it is protected from the risk of damage from flooding, vibration, corrosion, and stock/animal damage.

## E2.4 COMMISSIONING

Commissioning is required to ensure the meter is installed correctly (as per Section B), verified as accurate (as per Section B) and that the data is being collected and transferred accurately to the Consenting Authority (as per Section D).

Commissioning may require multiple third parties to complete the process.

- The meter installer
- The meter verifier
- The telemetry installer
- The data host.

The commissioning process shall consist of:

- The completion of the meter installation report, including but not limited to, the size, make, model, serial number, water meter reading and the Portable Pumps unique identifier (rather than consent ID if used across two or more consents).
- The verification report, including but not limited to, the size, make, model, serial number, meter reading before and after the verification, the result of the test and the Portable Pumps unique identifier (rather than consent ID if used across two or more consents).
- Telemetry commissioning report, including but not limited to, the serial number of the associated water meter, the meter reading before and after pumping to confirm the correct pulse rate and that the Consenting Authority is receiving the data and the Portable Pumps unique identifier (rather than consent ID if used across two or more consents).
- Most consenting authorities have their own commissioning forms which may seek additional information, these must be completed in entirety.

ADVISORY NOTE: Due to the special circumstances allowing metering equipment to be portable, commissioning of this equipment, including the water meter verification, should be completed prior to the portable pump being used to take water from any site of take.

## E3 Portable pump maintenance and management

### E3.1 FREQUENCY OF INSPECTIONS

Portable pumps are at a higher risk of data loss than permanent infrastructure sites. They therefore require closer monitoring and frequent inspections to ensure there is no data loss.

The minimum expectation is for two water meter readings to be provided to the Consenting Authority. One prior to any pumping occurring in Spring, the second at completion of the years pumping (i.e. the last irrigation event).

These readings may be provided to the Consenting Authority via water permit holders reporting the water meter reading with supporting evidence such as a time stamped and dated photograph, the service provider undertaking maintenance work who will complete the Consenting Authorities Audit Form, or the Consenting Authorities own staff may undertake a site visit to obtain the reading.

It is best practice to provide at least one more audit reading during the pumping over summer, as a “mid season” audit reading. This ensures that the water take is recorded via telemetry and received by the Consenting Authorities is accurate and no data is missing.

Audit Forms will include, but are not limited to, the serial number, meter reading (SUM One) and the time it was taken, the flow rate recorded if pumping is occurring during the inspection and the Portable Pumps unique identifier (rather than consent ID if used across two or more consents).

### E3.2 WINTERISATION

Winterisation refers to the practice of storing the portable pumps at the end of the water take period – usually this is at the end of the irrigation season. Most pumps are stored in sheds for element and theft protection, or they may be stored in shaded areas beside sheds and shelterbelts.

This storage can affect the solar panels from operating and the units to have no power to operate. It can also impact the reception for the telemetry units to send the data to the host. Therefore, many Consenting Authorities accept they may not receive water take records for several months.

For this to be an acceptable practice, owners of portable pumps must undertake the following action. Provide a photograph of the meter’s totaliser (SUM One) at the end of the pumping season, and a photograph at the start of the pumping season to demonstrate no water has been used during that winterisation period.

These photos must be date and timestamped (this information can usually be found in the files metadata). Owners of the portable pumps may have their service provider undertake this work for them or do it themselves. Some consenting Authorities may also offer this service.

In situations where reception is not an issue, and an alternate power supply is available (not solar) then it is expected that portable pump owners will ensure that while in storage the units continue to report 15-minute data to the Consenting Authority on a daily basis. Reporting zero take is required under the Regulations as part of the continuous measurement requirements.

### **E3.3 PERMIT HOLDERS ANNUAL RESPONSIBILITIES**

For Consenting Authorities to automatically latch the data to the correct site of take, most require an annual confirmation of all sites (GPS locations) that the portable pump is expected to be operated at. This is usually completed in early spring as lease agreements are confirmed and planting begins.





# Appendices

## Appendix A

### EXPLANATION OF ELEMENT PROTECTION STANDARDS

There are two rating systems for element protection of electrical equipment. The National Electrical Manufacturers Association (NEMA) Standard No. 250 – 2003 addresses the installation of equipment in non-hazardous locations, enclosure design and its environmental performance requirements. The International Electrotechnical Commission (IEC) 60529 Standard addresses protection against ingress. The Ingress Protection (IP) rating describes the degree of enclosure protection provided, not the enclosure itself. The IP code consists of two numbers, the first of which describes the degree of protection against the ingress of solids (e.g. dust) whilst the second describes the degree of protection against the ingress of liquids.

The following table describes the NEMA rating system and the protection level it refers to.

NEMA Rating	IP Equivalent	NEMA Definition
1	IP10	Enclosures constructed for indoor use; to provide a degree of protection to personnel against incidental contact with the enclosed equipment and to provide a degree of protection against falling dirt.
2	IP11	Enclosures constructed for indoor use; to provide a degree of protection to personnel against incidental contact with the enclosed equipment; to provide a degree of protection against dripping and light splashing of liquids.
3	IP54	Enclosures constructed for indoor or outdoor use; to provide a degree of protection to personnel against incidental contact with the enclosed equipment; to provide a degree of protection against falling dirt, rain, sleet, snow and windblown dust; and that will be undamaged by external formation of ice on the enclosure.
3R	IP14	Enclosures constructed for indoor or outdoor use; to provide a degree of protection to personnel against incidental contact with the enclosed equipment; to provide a degree of protection against falling dirt, rain, sleet and snow; and that will be undamaged by external formation of ice on the enclosure.
3S	IP54	Enclosures constructed for indoor or outdoor use; to provide a degree of protection to personnel against incidental contact with the enclosed equipment; to provide a degree of protection against falling dirt, rain, sleet, snow and windblown dust; and in which the external mechanism(s) remain operable when ice laden.
4	IP56	Enclosures constructed for indoor or outdoor use; to provide a degree of protection to personnel against incidental contact with the enclosed equipment; to provide a degree of protection against falling dirt, rain, sleet, snow, windblown dust, splashing water and hose-directed water; and that will be undamaged by external formation of ice on the enclosure.
4X	IP56	Enclosures constructed for indoor or outdoor use; to provide a degree of protection to personnel against incidental contact with the enclosed equipment; to provide a degree of protection against falling dirt, rain, sleet, snow, windblown dust, splashing water, hose-directed water and corrosion; and that will be undamaged by external formation of ice on the enclosure.
5	IP52	Enclosures constructed for indoor or outdoor use; to provide a degree of protection to personnel against incidental contact with the enclosed equipment; to provide a degree of protection against falling dirt, against settling airborne dust, lint, fibres and flyings; and to provide a degree of protection against dripping and light splashing of liquids.
6	IP67	Enclosures constructed for indoor or outdoor use; to provide a degree of protection to personnel against incidental contact with the enclosed equipment; to provide a degree of protection against falling dirt, against hose-directed water and the entry of water during occasional temporary emersion at a limited depth; and that will be undamaged by external formation of ice on the enclosure.
6P	IP68	Enclosures constructed for indoor or outdoor use; to provide a degree of protection to personnel against incidental contact with the enclosed equipment; to provide a degree of protection against falling dirt, against hose-directed water and the entry of water during occasional prolonged submersion at limited depth; and that will be undamaged by external formation of ice on the enclosure.
12	IP52	Enclosures constructed (without knockouts) for indoor use; to provide a degree of protection to personnel against incidental contact with the enclosed equipment; to provide a degree of protection against falling dirt, against circulating dust, lint, fibres and flyers; and to provide a degree of protection against dripping and light splashing of liquids.

NEMA Rating	IP Equivalent	NEMA Definition
12K	IP52	Enclosures constructed with knockout(s) for indoor use; to provide a degree of protection to personnel against incidental contact with the enclosed equipment; to provide a degree of protection against falling dirt, against circulating dust, lint, fibres and flyers; and to provide a degree of protection against dripping and light splashing of liquids.
13	IP54	Enclosures constructed for indoor use; to provide a degree of protection to personnel against incidental contact with the enclosed equipment; to provide a degree of protection against falling dirt, against circulating dust, lint, fibres and flyers; and against the spraying, splashing and seepage of water, oil and non-corrosive coolants.

The table below outlines and explains the IP numbering system:

IP Against Objects (1st No.)	Explanation
1	Protected against solid foreign objects of 50mm diameter and greater
2	Protected against solid foreign objects of 12.5mm diameter and greater
3	Protected against solid foreign objects of 5mm diameter and greater
4	Protected against solid foreign objects of 1mm diameter and greater
5	Protected against dust; limited to ingress (no harmful deposits)
6	Totally protected against the entry of dust

IP Against Liquids (2nd No.)	Explanation
0	Not Protected
1	Protected against vertically falling drops of water
2	Protected against vertically falling drops of water when tilted at any angle up to 15° from the vertical
3	Protected against direct sprays of water at any angle up to 60° from the vertical
4	Protected against water splashed from all directions; limited ingress permitted
5	Protected against jets of water from all directions; limited ingress permitted
6	Protected against strong jets of water from all directions; limited ingress permitted
7	Protected against effects of submersion from 0.15 m to 1 m
8	Protected against the effects of submersion in water, up to 10 m

# Appendix B

## OTHER CONSIDERATIONS FOR OPEN CHANNEL AND PARTIALLY FULL PIPE SYSTEMS

### On-site Access to Measurement Data

A water measurement system must have a simple, reliable and unambiguous means of access to the real-time data being recorded by the measurement system, for example:

- If the permit holder wants to manually take readings on site;
- For inspection and calibration of the water measurement system; and
- For accuracy verification of the water measurement system.

The following data must be accessible (the data does not need to be continuously displayed, but can be such that it is displayed, for instance, when a button is pressed):

- The cumulative flow volume expressed in cubic metres (m<sup>3</sup>), with:
  - Sufficiently large registering range to record cumulative flow volume corresponding to 1 year at the maximum expected flow rate without passing through zero, and
  - Sufficient resolution for verification purposes (1 decimal point scale interval, unless the minimum expected flow rate is greater than 40 L/s, in which case integer scale interval is allowed);
- The measured flow rate in litres per second (L/s) (with a recommended minimum resolution of one decimal point for verification purposes);
- Where water level is measured as a basis for deriving flow rate (not a requirement), the measured water level expressed in millimetres (mm); and
- The rating and algorithms used to calculate the flow rate.

An on-site display is one way of providing visual indication of the measurement data. If used, an on-site display should have the following characteristics:

- Be of a size and type that is easy to read with clearly specified units;
- The values displayed must be precisely the same value as that recorded in the data logger or transmitted by telemetry (if these are required by the relevant Consenting Authority);
- Resistant to corrosion and fogging; and
- Mounted in a way that allows for both easy access to and manual reading of the display unit (without, for example, the use of a mirror or ladder).

The Regulations do not explicitly require an on-site measurement display. Therefore, if the same information can be made available on site through alternative means (e.g. by connecting a laptop to the measurement system), an on-site display is not required unless specifically required by the relevant Consenting Authority.

### Construction Materials

The components of the water measurement system must be manufactured from sound, durable, corrosion-resistant materials. All parts of the water measurement system in contact with water must be manufactured from materials that are non-toxic, both chemically and biologically inert.

### Identification

If a unique identification/serial number is supplied by the Consenting Authority, then the water measurement system should be securely tagged/attached/imprinted with the number in a position that is clearly visible to facilitate its identification.

### Electrical Standards

The installation works must comply with all relevant New Zealand electrical installation standards and requirements. All components of the water measurement system that rely on electrical supply must have the supply maintained, as far as practicable, at all times. The installation must ensure that any electrical supply to the water measurement system cannot be deliberately interrupted without breaking a tamper-proof indicating seal visibly.

The measuring ability and calibration parameters of the water measurement system must not be affected by an interruption of the electrical supply.

If electromagnetic-based measurement systems are used, sources of electromagnetic interference (e.g. electric fences) should be considered in the site selection and system design.

### Enclosure Protection Rating

The environmental enclosure ratings for the various components of the water measurement system should reflect the degree of protection required for the installation environment. Refer to Appendix A for more information on these Ingress Protection (IP) or National Electrical Manufacturers Association (NEMA) ratings.

### Protection from Damage and Interference

Practicable precautionary consideration must be taken in the installation to prevent damage and interference to the components of the water measurement system from all sources including the following:

- Vehicles, livestock, vandalism, and flooding;
- Possible electrical interference from sources such as electric fencing or overhead power lines;
- Aggressive environmental conditions; and
- Extremes and fluctuations of temperature of the water or ambient atmosphere.

### Health and Safety

The design and installation of the water measurement system should consider the protection of operators, the public and the environment from harm from the system.

# Appendix C

## UNCERTAINTY AND ERROR – DETERMINATION OF MEASUREMENT ACCURACY

It is important not to confuse the terms 'error' and 'uncertainty'.

- **Error** is the difference between the reference meter measured value and the 'true value' of the service meter.
- **Uncertainty** is a quantification of the doubt about the measurement result – it indicates the quality of the measurement.

There is always a margin of doubt about any measurement. To understand the uncertainty two questions must be answered – 'How big is the margin?' and 'How bad is the doubt?' Thus, two numbers are needed to quantify an uncertainty; the width of the margin or *interval* ( $\pm x\%$ ); and how sure we are that the 'true value' is within that margin or *the confidence level* (*x percentile*).

Known errors, for example, the error associated with the reference meters calibration certificate can relatively easily be corrected for. But any error whose value is not known must be regarded as a source of uncertainty.

### Where do the errors and uncertainties come from?

Many factors can undermine a measurement. Flaws in the measurement may be visible or invisible. As real measurements are never made under perfect conditions, errors and uncertainties can come from:

- **The measuring instrument** – instruments can suffer from errors including bias, changes due to ageing, wear, or other kinds of drift, poor readability, noise (for electrical instruments) and many other problems.
- **The item being measured** – the flow may not be stable.
- **The measurement process** – the measurement itself may be difficult to make.
- **'Imported' uncertainties** – calibration of your instrument has an uncertainty which is then built into the uncertainty of the measurements you make.
- **Operator skill** – some measurements depend on the skill, judgement and reaction time of the operator. Note: gross mistakes are a different matter and are not to be accounted for as uncertainties.
- **Sampling issues** – the measurements must be properly representative of the process you are trying to assess.
- **The environment** – temperature, air pressure, humidity and many other conditions can affect the measuring instrument or the item being measured.

Where the size and effect of an error are known (e.g. from a calibration certificate) a correction can be applied to the measurement result. But, in general, uncertainties from each of these sources, would be individual 'inputs' contributing to the overall uncertainty in the measurement.

### Kinds of uncertainty?

The effects that give rise to uncertainty in measurement can be either:

- **Random** – where repeating the measurement gives a randomly different result. If so, the more measurements you make, and then average, the better estimate you generally can expect to get. or
- **Systematic** – where the same influence affects the result for each of the repeated measurements (but you may not be able to tell). In this case, you learn nothing extra just by repeating measurements. Other methods are needed to estimate uncertainties due to systematic effects, e.g. different measurements, or calculations.

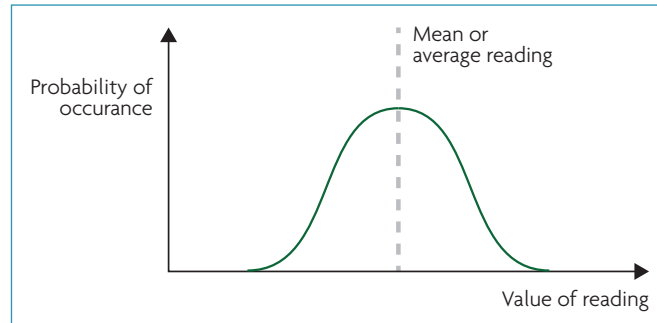
### Distribution – the 'shape' of the error

The spread of a set of values can take different forms, or probability distributions.

#### Normal distribution

In a set of readings, sometimes the values are more likely to fall near the average than further away. This is typical of a normal or Gaussian distribution.

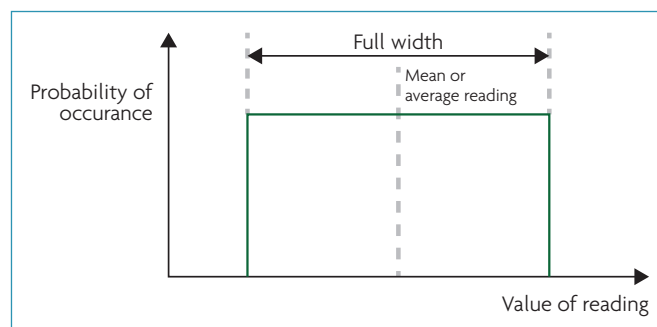
The diagram below shows a set of 10 'random' values in an approximately normal.



#### Uniform or rectangular distribution

When the measurements are quite evenly spread between the highest and the lowest values, a *rectangular or uniform* distribution is produced. For this distribution values would be as likely to fall on any one part as on another.

The diagram below shows a set of 10 'random' values in an approximately rectangular distribution.





### What is not a measurement uncertainty?

- **Mistakes made by operators** are not measurement uncertainties. They should not be counted as contributing to uncertainty. They should be avoided by working carefully and by checking work.
- **Tolerances** are not uncertainties. They are acceptance limits which are chosen for a process or a product.
- **Specifications** are not uncertainties. A specification tells you what you can expect from a product. It may be very wide-ranging, including 'non-technical' qualities of the item, such as its appearance.
- **Accuracy (inaccuracy) is not the same as uncertainty.** Unfortunately, usage of these words is often confused. Correctly speaking, 'accuracy' is a qualitative term (e.g. you could say that a measurement was 'accurate' or 'not accurate'). Uncertainty is quantitative. When a 'plus or minus' figure is quoted, it may be called an uncertainty, but not an accuracy.
- **Errors** are not the same as uncertainties.
- **Statistical analysis** is not the same as uncertainty analysis. Statistics can be used to draw all kinds of conclusions which do not by themselves tell us anything about uncertainty. Uncertainty analysis is only one of the uses of statistics.

### How to calculate uncertainty of measurement?

To calculate the uncertainty of a verification measurement, the verifier must identify the sources of uncertainty in the reference measurement, including the environmental/pipe conditions, measurement resolution, and inaccuracy in any input values (e.g. pipe wall thickness) required for some reference water measurement systems/devices. Then they must estimate the size of the uncertainty from each source.

### Standard uncertainties

All uncertainties should be expressed at the same confidence level, by converting them into **standard uncertainties**. A standard uncertainty is a margin whose size can be thought of as 'plus or minus one standard deviation'. The standard uncertainty tells us about the uncertainty of an average (not just about the spread of values).

#### Calculating standard uncertainties

No matter what are the sources of your uncertainties, there are two approaches to estimating them: 'Type A' and 'Type B' evaluations. In most measurement situations, uncertainty evaluations of both types are needed.

- **Type A evaluations** – uncertainty estimates using statistics (usually from repeated readings)
- **Type B evaluations** – uncertainty estimates from any other information. This could be information from past experience of the measurements, from calibration certificates, manufacturer's specifications, from calculations, from published information, and from common sense.

#### Calculating standard uncertainty for a Type A evaluation

When a set of several repeated readings has been taken (for a Type A estimate of uncertainty), the mean and estimated standard deviation, ( $s$ ) can be calculated. From these, the estimated standard uncertainty, ( $u$ ) of the mean is calculated from:

$$u = \frac{s}{\sqrt{n}}$$

Where:

$n$  is the number of measurements in the set

#### Calculating standard uncertainty for a Type B evaluation

Where information is scarce (in some Type B estimates) it is often only possible to estimate the upper and lower limits of uncertainty. You may then have to assume the value is equally likely to fall anywhere in between, i.e. a rectangular or uniform distribution. The standard uncertainty for a rectangular distribution is found from:

$$\frac{a}{\sqrt{3}}$$

Where:

$a$  is the semi-range (or half-width) between the upper and lower limits.

Rectangular or uniform distributions occur quite commonly, but if there is good reason to expect another distribution, then the calculation should be based on that. For example, it can be assumed that uncertainties 'imported' from the calibration certificate for a measuring instrument are normally distributed.

### Combining standard uncertainties

Finally the individual uncertainties when expressed in the same units and confidence levels, can be combined to give an overall figure (combined standard uncertainty). It can be found using the root-sum-squares method:

$$u_c = \sqrt{(u_1^2 + u_2^2 + u_3^2 \dots etc)}$$

Where:

$u_c$  is the combined standard uncertainty, and  $u_1, u_2, u_3$ , etc, are the component standard uncertainties

### Expanded uncertainty

Having scaled the components of uncertainty consistently to find the combined standard uncertainty is then necessary to re-scale the result. The combined standard uncertainty is equivalent to 'one standard deviation', but often an overall uncertainty is required stated at another level of confidence, i.e. 95 percent. This re-scaling is done using a coverage factor. Multiplying the combined standard uncertainty ( $u_c$ ) by a coverage factor ( $k$ ) gives a result which is called the expanded uncertainty ( $U$ ) i.e.

$$U = k u_c$$

A particular value of coverage factor gives a particular confidence level for the expanded uncertainty. If the combined uncertainty is normally distributed a coverage factor  $k = 1.96$  should be used to give a confidence level of 95 percent and for a uniform distribution  $k = 1.732$ . Other, less common, shapes of distribution have different coverage factors.

Conversely, wherever an expanded uncertainty is quoted with a given coverage factor, you can find the standard uncertainty by the reverse process, i.e. by dividing by the appropriate coverage factor. This means that expanded uncertainties given on calibration certificates, if properly expressed, can be 'decoded' into standard uncertainties.

### How to express the answer

It is important to express the answer so that a reader can use the information. The main considerations are:

- The measurement result, together with the uncertainty figure, i.e. the reference meter measurement was 32.5l /s  $\pm 0.9$ l/s
- The level of confidence and the coverage factor used
- How the uncertainty was estimated

### Example Showing Determination of Compliance

(Note: this example is for an open channel system, but applies to full pipe systems as well, the difference being the permissible uncertainties)

Open channel water measurement system (thus, maximum permitted uncertainty of  $\pm 10\%$  of reading, at 95% level of confidence)

- Average measurement from the installed system = 18.2 L/s.
- Average reference measurement = 20.1 L/s.

Current meter certified with uncertainty of  $\pm 1.5\%$  of reading at 95% level of confidence ( $k = 1.96$ ). Expressing the uncertainty in terms of standard uncertainty:

$$\frac{1.5\% \times 20.1 \text{ L/s}}{1.96} = 0.154 \text{ L/s}$$

Identified three sources of uncertainty, with estimated uncertainties which when converted have equivalent individual standard uncertainties of  $\pm 0.130$  L/s,  $\pm 0.202$  L/s, and  $\pm 0.311$  L/s.

All sources of uncertainty are independent of each other.

Combined standard uncertainty,

$$u_c = \sqrt{(0.154^2 + 0.130^2 + 0.202^2 + 0.311^2)} = 0.422 \text{ L/s}$$

To give a level of confidence of 95% ( $k = 1.96$ ),

$$\text{Expanded uncertainty} = 0.422 \text{ L/s} \times 1.96 = 0.827 \text{ L/s}$$

Therefore, the reference measurement is  $20.1 \pm 0.8$  L/s.

With a maximum permitted uncertainty of  $\pm 10\%$  of reading at 95% level of confidence, the measurement from the installed water measurement system is 18.2 L/s  $\pm 1.8$  L/s at 95% level of confidence.

The uncertainty intervals overlap, i.e. 18.2L/s is within  $20.1\text{L/s} \pm 2.6\text{L/s}$  ( $1.8 + 0.8$ ), thus the water measurement system is not identified as non-compliant.

# Appendix D

## CONSENTING AUTHORITY APPROVED VERIFICATION METHODS

Consenting Authority	Approved Verification Methods
Northland Regional Council	<ol style="list-style-type: none"> <li>1. Reference meter test rig</li> <li>2. Clamp-on ultrasonic</li> <li>3. On-site volumetric or gravimetric</li> <li>4. On-site electronic validation</li> </ol>
Auckland Council	Has to be a Blue Tick accredited verifier, using any of the accredited verification methods
Waikato Regional Council	Verification is required in-situ by a suitably qualified professional.
Bay of Plenty Regional Council	<ol style="list-style-type: none"> <li>1. The verification must be undertaken by a Blue Tick verifier accredited to operate within the Bay of Plenty; The verifier's reference meter must have a greater or equal accuracy to the meter being tested; Notwithstanding Point 2, Bay of Plenty Regional Council's preferred method is using a Reference Meter in series (in-line or by-pass);</li> <li>2. A calibrated ultrasonic clamp-on meter may be used in situations where the consented flow rate exceeds the capacity of the largest available test rig of any verifier in the Bay of Plenty but must have prior written approval by Bay of Plenty Regional Council before use.</li> </ol>
Gisborne Regional Council	<ol style="list-style-type: none"> <li>1. Reference meter test rig using mag-flow or,</li> <li>2. With written approval from the consent authority ultrasonic clamp-on</li> </ol>
Hawke's Bay Regional Council	<ol style="list-style-type: none"> <li>1. Reference meter test rig, using mag-flow</li> <li>2. Approval must be sought prior to testing if any other method is proposed</li> </ol>
Taranaki Regional Council	<ol style="list-style-type: none"> <li>1. Reference meter test rig using mag-flow</li> <li>2. Clamp-on ultrasonic accepted where mag flow rigs not practical.</li> <li>3. On-site volumetric or gravimetric</li> <li>4. On site electronic validation</li> </ol>
Horizons Regional Council	<ol style="list-style-type: none"> <li>1. Reference meter, in-line, by-pass or test rig.</li> <li>2. On-site volumetric or gravimetric</li> </ol>
Greater Wellington Regional Council	<ol style="list-style-type: none"> <li>1. Reference meter test rig using mag-flow</li> <li>2. Clamp-on ultrasonic accepted where mag flow rigs not practical.</li> <li>3. On-site volumetric or gravimetric</li> <li>4. On-site electronic validation</li> </ol>
Marlborough Regional Council	<ol style="list-style-type: none"> <li>1. Use of test rigs is the preferred method for all verifications. This includes the use of the Councils logging software. An ultrasonic clamp-on meter used on a dedicated pipe that has been tested at Meter Services in Auckland is deemed as an acceptable test rig configuration. Where it is impractical to use the provided logging software due to distance between in-situ meter and verifying meter, volume calculations are the acceptable method of determining error.</li> <li>2. Ultrasonic clamp-on meters can only be used to verify flows that are too great to pass through a test rig. Currently this threshold is 150 litres/second. In this situation a second clamp-on meter will be used simultaneously to support and confirm the result from the flow meter.</li> <li>3. For very small flows, volumetric testing is acceptable.</li> </ol>
Tasman District Council	<ol style="list-style-type: none"> <li>1. Use of test rigs is the preferred method for all verifications.</li> <li>2. Ultrasonic clamp-on meters can only be used to verify flows that are too great to pass through a test rig.</li> <li>3. For very small flows, volumetric testing is acceptable</li> </ol>

Consenting Authority	Approved Verification Methods
West Coast Regional Council	<ol style="list-style-type: none"> <li>1. Reference meter test rig using mag-flow</li> <li>2. Clamp-on ultrasonic.</li> <li>3. On-site volumetric or gravimetric</li> <li>4. On-site electronic validation</li> </ol>
Environment Canterbury	<ol style="list-style-type: none"> <li>1. Reference meter test rig using mag-flow</li> <li>2. Clamp-on ultrasonic accepted where mag flow rigs not practical.</li> <li>3. On-site volumetric or gravimetric</li> <li>4. On-site electronic validation</li> </ol>
Otago Regional Council watermetering@orc.govt.nz	<ol style="list-style-type: none"> <li>1. Calibrated reference meter in-line, by-pass or test rig (preferred method)</li> <li>2. Calibrated clamp-on ultrasonic (only where DN15 straight unobstructed pipe length is available on-site)</li> <li>3. Volumetric or gravimetric (suitable for <math>\leq 5\text{L/s}</math> flows)</li> <li>4. Open channel velocity-area (calibrated current meter) method (suitable for <math>\geq 10\text{L/s}</math>, stable flows)</li> <li>5. Open channel salt dilution gauging method (suitable for <math>\leq 10\text{L/s}</math>, turbulent flows)</li> </ol>
Environment Southland	<ol style="list-style-type: none"> <li>1. Clamp-on ultrasonic</li> <li>2. Reference meter in-line or by-pass using test rig</li> <li>3. On-site using volumetric or gravimetric</li> <li>4. On-site electronic validation*</li> </ol> <p><i>*refer section 2.4.8 Verification Methods in The New Zealand Water Measurement Code of Practice</i></p>

*Note: Always check with the relevant Consenting Authority as to which verification method is suitable in the area in which you are intending to operate.*

# Appendix E

## CONSENTING AUTHORITY VERIFICATION FREQUENCY (As at November 2021)

Consenting Authority	Meter Type	Interval for Testing
Northland Regional Council	Mechanical	5 Years
	Mag-Flow	5 Years
	Ultrasonic	5 Years
	Insertion	5 Years
Auckland Council	Mechanical	5 Years
	Mag-Flow	5 Years
	Ultrasonic	5 Years
	Insertion	5 Years
Waikato Regional Council	Mechanical	5 Years
	Mag-Flow	5 Years
	Ultrasonic	5 Years
	Insertion	5 Years
Bay of Plenty Regional Council	Mechanical	5 Years
	Mag-Flow	5 Years
	Ultrasonic	5 Years
	Insertion	5 Years
Gisborne Regional Council	Mechanical	5 years
	Mag-Flow	5 years
	Ultrasonic	5 years
	Insertion	NA
Hawke's Bay Regional Council	Mechanical	5 years
	Mag-Flow	5 years
	Ultrasonic	5 years
	Insertion	NA
Taranaki Regional Council	Mechanical	As recommended by verifier (max 5 years)
	Mag-Flow	5 years
	Ultrasonic	5 years
	Insertion	5 years
	Electronic Validation	2 years
Horizons Regional Council	Mechanical	5 years – Installation restricted
	Mag-Flow	5 years
	Ultrasonic	N/A for clamp-on, 5 years for approved full bore meters
	Insertion	NA

Consenting Authority	Meter Type	Interval for Testing
Greater Wellington Regional Council	Mechanical	5 years
	Mag-Flow	5 years
	Ultrasonic	5 years
	Insertion	5 years
Marlborough Regional Council	Mechanical	5 years
	Mag-Flow	5 years
	Ultrasonic	5 years
	Insertion	5 years
Tasman District Council	Mechanical	5 years
	Mag-Flow	5 years
	Ultrasonic	5 years
	Insertion	5 years
Environment Canterbury	Mechanical	2.5 years
	Mag-Flow	5 years
	Ultrasonic	2.5 years
	Insertion	5 years
West Coast Regional Council	Mechanical	5 years
	Mag-Flow	5 years
	Ultrasonic	5 years
	Insertion	5 years
Otago Regional Council	Mechanical	Annually (takes of 10L/s or more), Biennially (takes under 10L/s)
	Mag-Flow	5 years
	Ultrasonic	5 Years if Inbuilt, Annually if clamp-on
	Insertion	5 Years (Mag-flow)
	Other	Open channel takes – either annually or 5-years <i>Check consent conditions</i>
Environment Southland	Mechanical	Annually
	Mag-Flow	5 years
	Ultrasonic	5 years
	Insertion	5 years (Mag-flow)